

AGRICULTURAL & APPLIED ECONOMICS

VOLUME 29

JULY 1997

NUMBER 1

Proceedings

- | | |
|--|--|
| Is the New Deal Dead? | <i>P. A. Duffy</i> |
| Induced Policy Innovation | <i>A. P. Thurow and J. Holt</i> |
| Beef Market Signals and Production | <i>J. L. Outlaw, D. P. Anderson, and D. I. Padberg</i> |
| Livestock Industrialization and Environmental Consequences | <i>L. L. Martin and K. D. Zering</i> |
| Politics and Markets: Framing the Issues | <i>C. W. Abdalla and J. D. Shaffer</i> |
| Sustaining Animal Agriculture: Discussion | <i>P. B. Thompson</i> |
| Environmental Indicators for Macroeconomic Models | <i>R. L. Kellogg and D. W. Goss</i> |
| Reducing Atrazine Use | <i>M. O. Ribaud and T. M. Hurley</i> |
| Ecosystem Management and Social Scientists | <i>J. W. Milton, C. F. Kiker, and D. J. Lee</i> |
| Why Economists Should Talk to Scientists: Discussion | <i>W. N. Musser</i> |
| Why Economists Should Talk to Scientists: Discussion | <i>M. C. Ahearn</i> |
| Competitive Strategies of Biotechnology Firms | <i>B. D. Begemann</i> |
| Marketing Strategies of Biotechnology Firms | <i>M. A. Renkoski</i> |
| Coordination in the Agro-biotechnology Industry | <i>N. Kalaitzandonakes and B. Bjorson</i> |

Articles

- | | |
|---|--|
| Explaining Recycling Participation | <i>P. M. Jakus, K. H. Tiller, and W. M. Park</i> |
| Financial Performance and Specialization | <i>B. M. Purdy, M. R. Langemeier, and A. M. Featherstone</i> |
| Post-CRP Land Use Decisions | <i>P. N. Johnson, S. K. Misra, and R. T. Ervin</i> |
| Beef Cow Efficiency | <i>A. M. Featherstone, M. R. Langemeier, and M. Ismet</i> |
| Market Valuation of Cotton Fiber Attributes | <i>C. Chen, D. E. Ethridge, and S. M. Fletcher</i> |

EDITORIAL STAFF

Editors

Chung L. Huang
The University of Georgia

Michael E. Wetzstein
The University of Georgia

Editorial Council

Melvin Blase
University of Missouri

J. Michael Bowker
USDA/Forest Service

Garnett Bradford
Clemson University

George C. Davis
Texas A&M University

Bruce Dixon
University of Arkansas

Stephan Goetz
University of Kentucky

Shida R. Henneberry
Oklahoma State University

Paul M. Jakus
University of Tennessee

Richard Kazmierczak
Louisiana State University

Henry Kinnucan
Auburn University

David S. Kraybill
Ohio State University

Michael R. Langemeier
Kansas State University

Charles B. Moss
University of Florida

Dixie W. Reaves
*Virginia Polytechnic Institute
and State University*

Stan Spurlock
Mississippi State University

Ann Marie Vandeman
USDA/ERS

Technical Editor

Judith L. Harrison

1615 South Black Avenue, #82, Bozeman, MT 59715, (406) 587-0452

Editorial Assistants

Teresa A. Byrd
The University of Georgia

Marsha D. Richmond
The University of Georgia

EDITORIAL POLICY

The *Journal of Agricultural and Applied Economics (JAAE)* provides a forum for creative and scholarly work in agricultural economics and related areas. Contributions on methodology and applications in business, extension, research, and teaching phases of agricultural and applied economics are equally encouraged. Submitted manuscripts are subject to peer review for publication consideration. Submissions of critiques or comments on *JAAE* articles are welcomed.

EDITORIAL COMMUNICATIONS

Manuscript submissions and editorial correspondence should be addressed to: Chung L. Huang or Michael E. Wetzstein, Editors, *JAAE*, Conner Hall, The University of Georgia, Athens, GA 30602-7509. Phone: (706) 542-0747 or 542-0758, fax: (706) 542-0739, e-mail: JAAE@agecon.uga.edu.

The *Journal of Agricultural and Applied Economics* (ISSN 1074-0708) is published in July and December by the Southern Agricultural Economics Association (SAEA). Visit our worldwide web site at <http://www.agecon.uga.edu/~jaae/jaae.htm>.

Copyright © 1997 by the Southern Agricultural Economics Association. Any article or other material published in the *JAAE* may not be resubmitted for publication or republished elsewhere in full or in part without the written permission of the editors.

JOURNAL OF

AGRICULTURAL & APPLIED ECONOMICS

VOLUME 29

JULY 1997

NUMBER 1

Lifetime Achievement Award

Leo C. Polopolus iii

SAEA President, 1997–98

Patricia A. Duffy v

Presidential Address

Is the New Deal Dead? Government, Economics, and the Rural South / *Patricia A. Duffy* 1

Invited Paper Sessions

**Sustaining Animal Agriculture and Environmental Quality in the South:
What Happened, Why, and What Next?**

Induced Policy Innovation: Environmental Compliance Requirements for Dairies
in Texas and Florida / *Amy Purvis Thurow and John Holt* 17

Relationships Between Market Price Signals and Production Management:
The Case of Fed Beef / *Joe L. Outlaw, David P. Anderson, and Daniel I. Padberg* 37

Relationships Between Industrialized Agriculture and Environmental Consequences:
The Case of Vertical Coordination in Broilers and Hogs /
Laura L. Martin and Kelly D. Zering 45

Politics and Markets in the Articulation of Preferences for Attributes of the Rapidly
Changing Food and Agricultural Sectors: Framing the Issues /
Charles W. Abdalla and James D. Shaffer 57

Sustaining Animal Agriculture and Environmental Quality in the South:
What Happened and Why? Discussion / *Paul B. Thompson* 73

Why Economists Should Talk To Scientists and What They Should Ask

Development of Environmental Indicators for Use in Macroeconomic Models /
Robert L. Kellogg and Don W. Goss 77

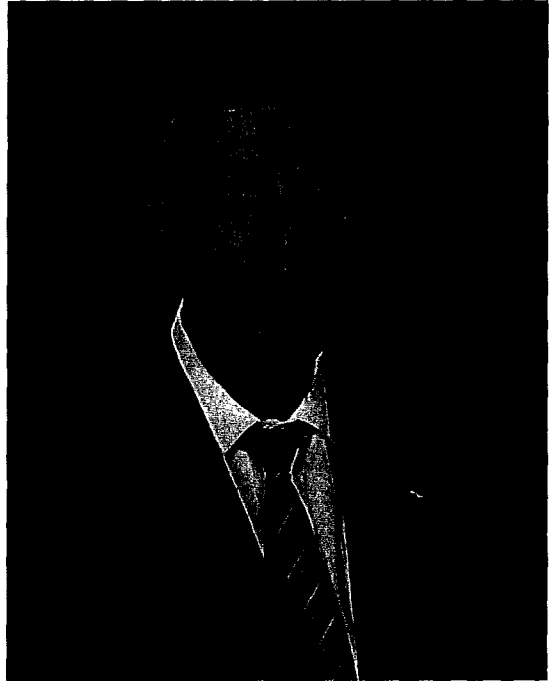
Economic and Environmental Effects Associated with Reducing the Use of Atrazine:
An Example of Cross-Disciplinary Research /
Marc O. Ribaldo and Terrance M. Hurley 87

Ecosystem Management and the Florida Everglades: The Role of Social Scientists / <i>J. Walter Milon, Clyde F. Kiker, and Donna J. Lee</i>	99
Why Economists Should Talk to Scientists and What They Should Ask: Discussion / <i>Wesley N. Musser</i>	109
Why Economists Should Talk to Scientists and What They Should Ask: Discussion / <i>Mary C. Ahearn</i>	113
Agro-biotechnology: Firm Strategies, Industry Structure, and Implications for U.S. Agriculture	
Competitive Strategies of Biotechnology Firms: Implications for U.S. Agriculture / <i>Brett D. Begemann</i>	117
Marketing Strategies of Biotechnology Firms: Implications for U.S. Agriculture / <i>Matthew A. Renkoski</i>	123
Vertical and Horizontal Coordination in the Agro-biotechnology Industry: Evidence and Implications / <i>Nicholas Kalaitzandonakes and Bruce Bjornson</i>	129
Articles	
Explaining Rural Household Participation in Recycling / <i>Paul M. Jakus, Kelly H. Tiller, and William M. Park</i>	141
Financial Performance, Risk, and Specialization / <i>Barry M. Purdy, Michael R. Langemeier, and Allen M. Featherstone</i>	149
A Qualitative Choice Analysis of Factors Influencing Post-CRP Land Use Decisions / <i>Phillip N. Johnson, Sukant K. Misra, and R. Terry Ervin</i>	163
A Nonparametric Analysis of Efficiency for a Sample of Kansas Beef Cow Farms / <i>Allen M. Featherstone, Michael R. Langemeier, and Mohammad Ismet</i>	175
Textile Manufacturers' Market Valuation of Cotton Fiber Attributes / <i>Changping Chen, Don E. Ethridge, and Stanley M. Fletcher</i>	185
Abstracts	
Selected Papers	197
Organized Symposia	216
Posters	219
SAEA Business	
Secretary-Treasurer's Report	221
Editors' Report	223

Dr. Leo C. Polopolus

Lifetime Achievement Award

- AAEA Fellow, 1995
- Professor and Chairman (1973–83), Department of Food and Resource Economics, University of Florida, Gainesville, 1969–present
- CSRS Representative, Cooperative State Research Service, U.S. Department of Agriculture, 1984–91
- Co-Director, Center for Greek Studies, University of Florida, 1980–present
- Co-Director, Center for Agricultural Law, University of Florida, 1982–87
- Assistant Dean, Graduate School, University of Florida, 1969–73
- Research Economist to Director, Economic Research Department, Florida Citrus Commission, and Adjunct Associate Professor, University of Florida, 1965–68
- Assistant and Associate Professor, Department of Agricultural Economics and Agribusiness, Louisiana State University, 1960–65
- Naumes Family Visiting Professor in Agribusiness, Leavey School of Business, Santa Clara University, California, 1985
- Visiting Professor of Marketing, Mediterranean Agronomic Institute, Chania, Greece, 1988
- President, American Agricultural Economics Association, 1982–83
- Editor, *American Journal of Agricultural Economics*, 1972–74
- Editorial Advisory Councils: *Choices*, 1984–87; *Agribusiness: An International Journal*, 1983–present; *Agricultural and Human Values*, 1984–present
- Awards: Outstanding Junior Faculty Award, Gamma Sigma Delta, 1971; co-winner, AAEA Essay Contest, 1969; Distinguished Service Award, Florida Citrus Commission,



1969; Research Award, Florida Fruit and Vegetable Association, 1991; Certificate of Merit, CSRS/USDA, 1991

Leo C. Polopolus has significantly contributed to the agricultural economics discipline in the fields of agricultural marketing and agricultural labor, having been heavily involved with the latter for some time. Serving as consultant to the U.S. Secretary of Labor, he evaluated various minimum wage and overtime hour exemptions to the Fair Labor Standards Act and later assisted, through research, with the initiation of unemployment insurance for farm workers under federal statute.

His overriding research philosophy has centered around the solution of real-world problems for decision makers. Several new ap-

proaches and methodologies were developed for the profession as a result of his work, and he is recognized with distinction for his research on synthetic and substitute foods. One of his former graduate students (now president and CEO of a large agribusiness firm) stated, "Polopolus has made a major contribution to agribusiness management, both within the United States and around the world. . . . One of his greatest attributes is that he really knows how to use his economics knowledge to solve practical problems in agriculture and business."

Perhaps Polopolus' most unique talent is his capacity to simplify complex economic issues into oral and written language easily understood by the general public. One of his colleagues noted, "He is a relentless educator. The remarkable aspect is that he approaches issues in such a way that the person or group does not recognize at the time that this is taking place; they are merely having an interesting discussion." This talent has also contributed to his outstanding performance as teacher, leader, author, invited lecturer, and witness before numerous congressional committees and state legislative and administrative bodies.

Polopolus' students, first at Louisiana State University, and since at the University of Florida, have praised his teaching abilities and the mutual respect that he fosters in student/faculty relationships. These qualities also enhance his role as Co-Director of the University of Florida's Center for Greek Studies, a posi-

tion he has held since the Center's inception in which he was a primary player. Showing great respect for his heritage, he avidly supports not only the Center but also the larger Greek community in Florida and in the South. He puts his talents as an amateur musician to use in annual fundraisers to support these affiliations.

Polopolus' outgoing personality and his exceptional communication skills make him a natural leader. As such, he served first as Director of Economic Research for the Florida Citrus Commission, and later as Assistant Dean of the Graduate School and Chairman of the Food and Resource Economics Department at the University of Florida.

He has authored more than 200 publications—two books, *Marketing Sugar and Other Sweeteners*, and *Vegetable Markets in the Western Hemisphere*; numerous book chapters; professional journal articles; monographs; bulletins; papers; and various trade and popular publications. As president of the American Agricultural Economics Association, he initiated the creation of *Choices* magazine, and he served as editor for the *American Journal of Agricultural Economics*.

Regarded as a pioneer in the field of agribusiness, Polopolus is a charter member of the Southern Agricultural Economics Association. His professional contributions to southern agriculture are unparalleled, and his talents and leadership have been, and continue to be, invaluable assets to the profession.

Patricia A. Duffy

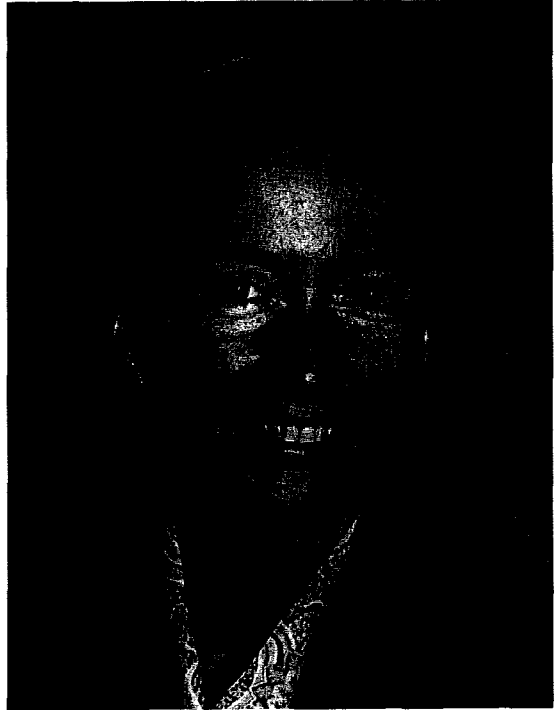
1997–98 President

Patricia A. Duffy grew up in Pembroke, Massachusetts, where she attended Silver Lake High School. She received her B.A. from Boston College in English and French. After completing her undergraduate degree, she joined the Peace Corps and spent two years teaching vocational agriculture in Zaire. She then attended Texas A&M University and received a Ph.D. in Agricultural Economics in 1985. Before completing her degree, she spent one year in Washington, DC, as a legislative aide to a U.S. Representative, working primarily on issues related to the federal budget.

Dr. Duffy accepted a faculty position at Auburn University in 1985, and is currently a professor of agricultural economics at that institution. She has taught a variety of classes, including agricultural policy, agricultural marketing, econometrics, production economics, and research methods. Her primary undergraduate teaching responsibility involves farm management. In 1994, along with her colleagues Neil R. Martin, Jr., and Gregory Traxler, Dr. Duffy received the Southern Agricultural Economics Association teaching award for her work in that curriculum.

Dr. Duffy's research has focused primarily on agricultural policy and farm management. In the policy area, she worked for several years on a project to evaluate the effects of boll weevil eradication on cotton producers, and has also conducted work on the effects of other agricultural policy on cotton production and exports. Some of her recent farm management research has involved examining the profitability of alternative stocking rates and feeding regimes for stocker cattle and developing optimal-scheduling models for horticultural nurseries.

Dr. Duffy served for three years on the editorial board of the *Southern Journal of Agricultural Economics*. In 1994, she was elected



second vice president of the Southern Agricultural Economics Association, and subsequently served as first vice president of the Association. She is currently serving on the Foundation Board of the American Agricultural Economics Association and is a member of the editorial board of the *Southern Business and Economic Journal*.

At Auburn University, Dr. Duffy has been a member of the University Senate, the University Senate Rules Committee, the Core Curriculum Oversight Committee, and the York Lecture Committee. She is now a member of the Student Grievance Committee and the Faculty Handbook Review Committee.

Patricia Duffy and her husband, James Novak, live in Opelika, Alabama. They have one child, Sylvia.

