

SB 392 (1967)

USDA STATISTICAL BULLETINS

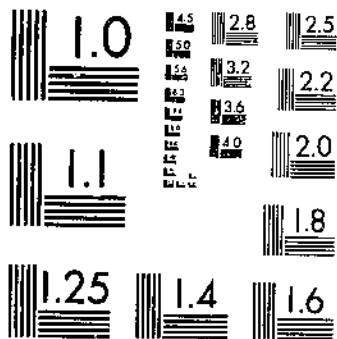
UPDATA

CALF CROP, LAMB CROP, WOOL PRODUCTION, MOHAIR PRODUCTION

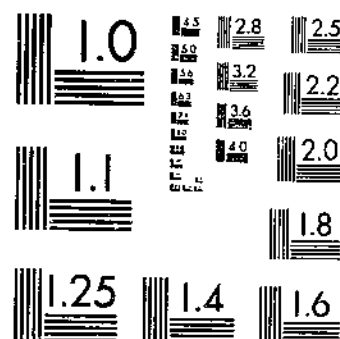
1960-64

1 OF 1

START



MICROCOPY RESOLUTION TEST CHART
NATIONAL BUREAU OF STANDARDS-1963-A



MICROCOPY RESOLUTION TEST CHART
NATIONAL BUREAU OF STANDARDS-1963-A

REFERENCE
ONLINE LOAN

CALF CROP LAMB CROP WOOL PRODUCTION MOHAIR PRODUCTION

REVISED ESTIMATES
BY STATES
1960-64

DEPOSITED
APR 3 1967
LOS ANGELES PUBLIC LIBRARY

UNITED STATES DEPARTMENT OF AGRICULTURE
Statistical Reporting Service Crop Reporting Board
Washington, D.C. February 1967
Statistical Bulletin No. 392

CALF CROP, LAMB CROP, WOOL PRODUCTION, MOHAIR PRODUCTION,
REVISED ESTIMATES BY STATES, 1960-64

Revised Estimates

This report is one of a group on agricultural products presenting revised estimates for calf crop, lamb crop, wool production, and mohair production for 1960-64. These revisions resulted from a review and analysis of the 1964 Census of Agriculture covering livestock numbers and of other data. Estimates of numbers on farms January 1 are revised every 5 years after taking into consideration the changes indicated by Census enumerations and all the other data available. When revisions are made for the inventory numbers, corresponding adjustments are usually necessary in production items.

Calf Crop and Lamb Crop

The calf crop and lamb crop estimates continue the official series of calves born and lambs saved as shown in "Meat Animals, Farm Production, and Income, 1922-44," 1/ "Meat Animals, Farm Production, Disposition, and Income, 1945-49," 2/ "Meat Animals, Farm Production, Disposition, and Income, 1950-54," 3/ and "Meat Animals, Farm Production, Disposition, and Income, 1955-59." 4/

The number of calves born is computed by multiplying the number of all cows 2 years old and older on farms and number at the beginning of the year by an estimated percentage calf crop for the year. The estimated calf crop percentage is not strictly a calving rate. The figure represents calves born expressed as a percentage of the beginning inventory of cows and heifers 2 years old and older on January 1 and not the number of all cows and heifers giving birth to calves during the year.

The number of lambs saved is defined as the number of lambs docked or branded in the 13 Western sheep States (11 Western States, South Dakota, and Texas). In other States the number of lambs saved is the number living on July 1 or sold before that date. The estimated lamb crop percentage is the number of lambs saved per 100 ewes 1 year old and older on farms and ranches at the beginning of the year.

Wool and Mohair Production

The wool production estimates continue the official series as shown in "Wool and Mohair, Production and Value, United States and by States, 1909-59." 5/ The average prices for wool and mohair for 1960-62 are for the marketing season April through March; for 1963, April-December; for 1964, January through December.

1/ United States Department of Agriculture, Bureau of Agricultural Economics. Meat Animals, Farm Production, and Income, 1924-44. Revised Estimates by States. 152 pp., September 1947.

2/ United States Department of Agriculture, Bureau of Agricultural Economics. Meat Animals, Farm Production, Disposition, and Income, 1945-49. Revised Estimates by States. U.S. Dept. Agr. Statis. Bul. 113, 19 pp., July 1952.

3/ United States Department of Agriculture, Agricultural Marketing Service. Meat Animals, Farm Production, Disposition, and Income, 1950-54. Revised Estimates by States. U.S. Dept. Agr. Statis. Bul. 184, 35 pp., June 1956.

4/ United States Department of Agriculture, Statistical Reporting Service. Meat Animals, Farm Production, Disposition, and Income, 1955-59. Revised Estimates by States. U.S. Dept. Agr. Statis. Bul. 284, 37 pp., May 1961.

5/ United States Department of Agriculture, Statistical Reporting Service. Wool and Mohair, Production and Value, United States, by States, 1909-59. U.S. Dept. Agr. Statis. Bul. 309, 35 pp., April 1962.

Table 1.--Calf and Lamb crops: Number calves born and number born as a percentage of cows 2 years old and older and number of lambs saved as percentage of ewes 1 year old and older, United States, 1960-64

Year	Calf crop 1/			Lamb crop 2/		
	Calves born		All cows & heifers	Lamb saved 4/		Ewes 1 year old and older
	As percentage of cows & heifers 2 yrs. old and older			As percentage of ewes 1 year old and older		
	Number	Percent	Number	Percent	Number	Percent
1,000 head		1,000 head		1,000 head		
1960 ...	39,416	86	45,958	21,012	94	22,406
1961 ...	40,180	86	46,598	20,782	94	22,199
1962 ...	41,441	87	47,654	19,712	93	21,252
1963 ...	42,268	86	48,968	18,516	92	20,028
1964 ...	43,809	87	50,441	16,994	91	18,723

1/ Includes Alaska beginning 1961. 2/ Includes Alaska beginning 1961. Hawaii not available.
 3/ Not strictly a calving rate. Figure represents calves born expressed as percentage of the number of cows and heifers 2 years old and older on January 1 and not the number of all cows and heifers giving birth to calves during the year. 4/ Lambs saved defined as lambs living June 1, or sold before June 1 in the Native States and lambs docked or branded in the Western sheep States.

Table 2.--Wool: Number of sheep shorn, production and value, and pulled wool production, United States, 1960-64 1/

Year	Shorn wool				Pulled wool			Total wool production
	Sheep and lambs shorn 3/	Weight per fleece	Production	Price per pound 4/	Weight per skin	Production	Value	
	1,000 head	Pounds	1,000 pounds	Cents	1,000 Pounds	1,000 pounds	1,000 dollars	
	head	Pounds	pounds	dollars	Pounds	pounds	pounds	
1960 2/...	31,081	8.54	265,277	42.0	111,412	3.26	33,600	298,877
1961 ...	30,454	8.51	259,161	43.0	111,445	3.25	34,500	293,661
1962 ...	29,193	8.45	246,636	47.7	117,579	3.30	29,900	276,536
1963 ...	27,264	8.53	232,445	48.4	112,426	3.32	28,800	261,246
1964 ...	25,455	8.34	212,333	53.2	112,877	3.41	25,100	237,433

1/ Data for Hawaii not available.
 2/ Excludes Alaska.
 3/ Includes shearing at commercial feeding yards.
 4/ Computed by weighting State average prices for all wool sold during the marketing year by sales of shorn wool. For the year 1960 through 1962, the marketing year was April through March. For 1963, the marketing year was April through December. For 1964, the marketing year was January through December.

Table 3.--Mohair: Number goats clipped, production, and value of sales, seven States, 1960-64 1/

Year	Goats clipped 2/	Average clip per goat	Production	Price per pound 3/	Value
	1,000 head	Pounds	1,000 pounds	Cents	1,000 dollars
	head	Pounds	pounds	Cents	dollars
1960 ...	3,888	6.3	24,467	89.7	21,937
1961 ...	4,021	6.6	26,411	85.6	22,615
1962 ...	4,236	6.4	27,215	71.4	19,430
1963 ...	4,363	6.6	29,007	88.1	25,562
1964 ...	4,568	6.5	29,736	94.3	28,053

1/ Includes Missouri, Texas, New Mexico, Arizona, Utah, Oregon and California.
 2/ In States where goats are clipped twice a year, the number clipped is the sum of goats and kids clipped in the spring and kids clipped in the fall.
 3/ For each State the average price is a weighted average for all mohair sold during the marketing season. For the years 1960 through 1962, the marketing year was April through March. For 1963, the marketing year was April through December, beginning in 1964, January through December. The 7-State average price is computed by weighting State prices by production of mohair.

Table 4.--Calf crop: Number calves born, by States, 1960-64

State	Calves born				
	1960	1961	1962	1963	1964
	1,000	1,000	1,000	1,000	1,000
	head	head	head	head	head
Maine	96	97	94	90	86
New Hampshire	53	53	52	48	47
Vermont	245	250	244	237	231
Massachusetts	88	87	85	82	79
Rhode Island	13	12	11	10	10
Connecticut	82	80	78	74	71
New York	1,212	1,204	1,223	1,183	1,181
New Jersey	117	114	114	108	104
Pennsylvania	918	941	947	925	921
Ohio	882	876	880	847	825
Indiana	718	721	713	703	709
Illinois	1,158	1,158	1,160	1,145	1,162
Michigan	709	719	719	703	697
Wisconsin	2,272	2,272	2,309	2,319	2,313
Minnesota	1,568	1,599	1,618	1,636	1,684
Iowa	1,742	1,755	1,777	1,810	1,911
Missouri	1,654	1,683	1,740	1,798	1,895
North Dakota	848	886	910	963	1,071
South Dakota	1,424	1,452	1,485	1,539	1,653
Nebraska	1,689	1,714	1,746	1,802	1,917
Kansas	1,395	1,492	1,620	1,655	1,726
Delaware	27	26	26	24	22
Maryland	232	234	230	225	218
Virginia	633	652	670	675	648
West Virginia	255	255	258	252	258
North Carolina	390	398	399	396	413
South Carolina	233	233	240	236	254
Georgia	598	612	646	685	733
Florida	601	670	725	716	774
Kentucky	947	1,000	1,059	1,117	1,181
Tennessee	881	920	963	1,003	1,041
Alabama	761	754	780	802	833
Mississippi	925	939	969	1,011	1,059
Arkansas	644	642	681	720	749
Louisiana	843	870	904	901	953
Oklahoma	1,461	1,518	1,603	1,702	1,820
Texas	4,078	4,137	4,386	4,517	4,638
Montana	1,081	1,107	1,115	1,190	1,266
Idaho	539	553	583	595	626
Wyoming	509	512	525	560	595
Colorado	810	816	848	892	916
New Mexico	561	586	622	646	663
Arizona	297	317	332	337	352
Utah	317	305	320	319	325
Nevada	225	226	242	234	246
Washington	473	508	526	535	542
Oregon	624	630	668	688	724
California	1,524	1,529	1,530	1,526	1,597
48 States	39,355	40,114	41,375	42,201	43,739
Alaska	---	3.5	3.7	3.8	4.0
Hawaii	61	62	62	63	66
United States	39,416	40,180	41,441	42,268	43,809

Table 5.--Calf crop: Calves born as percentage of cows and heifers 2 years old and older and number of cows 2 years old and older January 1, by States, 1960-64

State	Calves born as percentage of cows and heifers 2 years old and older :					Cows and heifers 2 years old and older January 1				
	1960	1961	1962	1963	1964	1960	1961	1962	1963	1964
	Pct.	Pct.	Pct.	Pct.	Pct.	1,000 head	1,000 head	1,000 head	1,000 head	1,000 head
Maine	85	84	82	80	82	113	115	115	112	105
New Hampshire	88	87	85	81	85	60	61	61	59	55
Vermont	85	86	84	83	84	288	291	291	285	275
Massachusetts	85	82	83	82	82	104	106	103	100	96
Rhode Island	79	80	82	79	82	16	15	14	13	12
Connecticut	82	81	81	80	80	100	99	96	92	89
New York	86	84	85	83	85	1,409	1,433	1,439	1,425	1,389
New Jersey	81	80	81	79	80	144	143	141	137	130
Pennsylvania	86	87	87	86	87	1,068	1,082	1,088	1,076	1,059
Ohio	86	85	86	85	85	1,025	1,030	1,023	997	971
Indiana	87	88	87	87	88	825	819	819	808	806
Illinois	88	88	88	87	89	1,316	1,316	1,318	1,316	1,306
Michigan	86	88	87	86	87	824	817	826	817	801
Wisconsin	90	90	91	91	91	2,525	2,525	2,537	2,548	2,542
Minnesota	90	90	89	89	90	1,742	1,777	1,818	1,838	1,871
Iowa	90	91	91	92	94	1,936	1,929	1,953	1,967	2,033
Missouri	89	90	90	89	92	1,858	1,870	1,933	2,020	2,060
North Dakota	89	92	92	92	95	953	963	989	1,047	1,127
South Dakota	93	93	93	93	93	1,531	1,561	1,597	1,655	1,777
Nebraska	91	91	91	93	92	1,855	1,885	1,919	1,938	2,095
Kansas	88	91	92	89	92	1,585	1,640	1,761	1,859	1,876
Delaware	78	79	82	76	80	35	33	32	31	27
Maryland	83	83	84	82	84	279	282	274	274	260
Virginia	84	85	85	84	83	753	767	788	804	781
West Virginia	85	85	85	85	87	300	300	304	297	296
North Carolina	77	78	78	78	79	507	510	511	508	523
South Carolina	78	79	79	82	80	299	295	304	312	318
Georgia	80	81	81	83	83	748	756	797	825	883
Florida	63	68	74	72	74	954	985	980	995	1,046
Kentucky	88	90	90	90	90	1,076	1,111	1,177	1,241	1,312
Tennessee	86	88	87	87	86	1,024	1,046	1,107	1,153	1,210
Alabama	81	81	82	81	82	939	931	951	990	1,016
Mississippi	75	76	76	76	77	1,233	1,236	1,275	1,330	1,375
Arkansas	81	80	84	84	83	795	803	811	857	903
Louisiana	78	78	79	78	78	1,081	1,116	1,144	1,155	1,222
Oklahoma	87	86	85	86	86	1,679	1,765	1,886	1,979	2,116
Texas	84	83	86	82	81	4,855	4,984	5,100	5,509	5,726
Montana	90	91	91	92	92	1,201	1,216	1,225	1,293	1,376
Idaho	88	91	91	90	91	613	608	641	661	688
Wyoming	87	88	89	90	88	585	582	590	622	676
Colorado	90	88	90	90	91	900	927	942	991	1,007
New Mexico	84	85	85	86	85	671	689	732	751	780
Arizona	75	81	79	79	81	396	391	420	427	434
Utah	88	85	86	87	87	360	359	372	367	374
Nevada	80	78	83	81	80	281	290	292	289	308
Washington	87	90	90	90	90	544	564	584	594	602
Oregon	85	86	90	89	89	734	732	742	773	813
California	87	87	88	88	89	1,752	1,750	1,739	1,735	1,794
48 States	86	86	87	86	87	45,871	46,505	47,561	48,872	50,341
Alaska	---	83	80	84	87	---	4.2	4.6	4.5	4.6
Hawaii	70	70	70	69	69	87	89	89	91	95
United States	86	86	87	86	87	45,958	46,598	47,654	48,968	50,441

Table 6. Lamb crop: Number lambs saved, by States, 1960-64

State	Lambs saved				
	1960	1961	1962	1963	1964
	1,000 head	1,000 head	1,000 head	1,000 head	1,000 head
Maine	26	25	25	25	23
New Hampshire ..	5.2	4.1	4.7	4.2	4.1
Vermont	9.0	7.0	6.7	6.2	5.7
Massachusetts ..	8.0	7.0	7.8	7.4	7.4
Rhode Island ..	2.0	1.8	1.6	1.5	2.0
Connecticut	5.0	4.6	4.8	4.6	4.5
New York	119	110	108	99	102
New Jersey	12	11	9.2	8.2	7.5
Pennsylvania ...	161	156	154	139	137
Ohio	703	655	612	589	535
Indiana	358	356	347	292	258
Illinois	469	458	451	381	356
Michigan	258	238	244	214	216
Wisconsin	185	187	169	165	147
Minnesota	709	750	706	632	564
Iowa	943	933	875	782	750
Missouri	548	486	446	352	320
North Dakota ..	534	535	512	476	418
South Dakota ...	1,257	1,309	1,231	1,212	1,105
Nebraska	297	313	301	268	243
Kansas	371	411	410	407	369
Delaware	4.5	3.3	3.0	2.8	2.1
Maryland	30	28	23	22	21
Virginia	272	271	253	232	219
West Virginia ..	240	236	219	209	187
North Carolina ..	41	43	40	32	25
South Carolina ..	5.8	5.8	5.1	4.0	3.4
Georgia	16	11	10	8.2	5.6
Florida	4.0	4.2	3.6	4.7	4.0
Kentucky	476	416	323	249	206
Tennessee	185	169	140	122	88
Alabama	22	19	14	10	7.7
Mississippi	35	34	24	21	18
Arkansas	31	30	24	19	15
Louisiana	41	43	35	29	24
Oklahoma	161	158	132	128	113
Texas	3,075	3,116	2,963	2,745	2,580
Montana	1,225	1,201	1,092	1,060	1,037
Idaho	1,010	999	927	889	761
Wyoming	1,560	1,512	1,448	1,470	1,355
Colorado	1,212	1,164	1,164	1,128	974
New Mexico	690	755	703	707	606
Arizona	286	278	278	298	287
Utah	927	899	901	872	801
Nevada	233	215	217	204	196
Washington	262	254	246	215	190
Oregon	685	692	630	603	550
California	1,303	1,263	1,263	1,162	1,139
48 States	21,012	20,777	19,706	18,511	16,989
Alaska	---	5.0	5.0	5.0	5.0
Hawaii	---	---	---	---	---
United States ..	21,012	20,782	19,712	18,516	16,994

Table 7.--Lamb crop: Lambs saved as percentage of ewes 1 year old and older January 1 and number of ewes 1 year old and older January 1, by States, 1960-64

State	Lambs saved as percentage of ewes 1 year old and older January 1					Ewes 1 year old and older January 1				
	1960	1961	1962	1963	1964	1960	1961	1962	1963	1964
	Pct.	Pct.	Pct.	Pct.	Pct.	1,000 head	1,000 head	1,000 head	1,000 head	1,000 head
Maine	100	104	104	100	105	26	24	24	25	22
New Hampshire	104	82	94	93	98	5.0	5.0	5.0	4.5	4.2
Vermont	100	88	96	89	93	9	8	7	7	6.1
Massachusetts	100	88	98	92	92	8	8	8	8	8
Rhode Island	100	106	94	88	111	2.0	1.7	1.7	1.7	1.8
Connecticut	100	92	96	87	100	5.0	5.0	5.0	5.3	4.5
New York	103	108	109	105	110	116	102	99	94	93
New Jersey	109	100	92	91	94	11	11	10	9	8
Pennsylvania	95	96	99	97	104	169	162	156	144	132
Ohio	93	95	95	100	99	757	689	641	590	543
Indiana	102	104	104	104	104	350	343	333	281	247
Illinois	107	105	109	106	108	437	437	415	361	329
Michigan	100	100	105	102	109	258	237	232	209	199
Wisconsin	112	115	106	109	107	165	163	160	152	138
Minnesota	115	115	111	112	113	614	651	638	564	497
Iowa	102	104	102	103	103	922	894	858	757	727
Missouri	101	98	102	98	97	540	497	437	358	329
North Dakota	111	109	109	108	105	480	490	470	442	398
South Dakota	104	102	103	105	104	1,207	1,286	1,191	1,154	1,061
Nebraska	101	106	106	105	103	295	295	283	255	237
Kansas	88	92	92	97	99	422	447	447	420	374
Delaware	112	106	100	112	105	4.0	3.1	3.0	2.5	2.0
Maryland	100	104	100	105	111	30	27	23	21	19
Virginia	106	109	109	110	114	257	249	232	211	192
West Virginia	106	106	107	109	108	227	222	204	192	173
North Carolina	98	102	108	107	104	42	42	37	30	24
South Carolina	72	83	80	89	85	8.0	7.0	6.4	4.5	4.0
Georgia	84	73	83	82	80	19	15	12	10	7
Florida	98	81	73	89	77	5.0	5.2	4.9	5.3	5.2
Kentucky	113	115	107	106	106	420	361	303	236	194
Tennessee	93	101	93	99	97	199	168	150	123	91
Alabama	88	90	100	83	86	25	21	14	12	9
Mississippi	71	85	83	70	82	49	40	29	30	22
Arkansas	89	94	96	100	100	35	32	25	19	15
Louisiana	63	75	74	67	67	65	57	47	43	36
Oklahoma	97	97	99	102	102	166	163	134	125	111
Texas	78	76	73	69	69	3,942	4,100	4,059	3,978	3,739
Montana	92	93	94	95	92	1,331	1,291	1,162	1,116	1,127
Idaho	112	113	114	114	111	902	884	813	780	686
Wyoming	88	87	85	89	82	1,773	1,738	1,703	1,652	1,652
Colorado	101	100	102	103	101	1,200	1,164	1,141	1,095	964
New Mexico	80	84	80	82	74	874	914	890	867	816
Arizona	82	81	84	85	82	347	342	331	349	351
Utah	87	87	89	87	85	1,065	1,033	1,012	1,002	942
Nevada	85	87	87	88	89	274	247	249	232	220
Washington	112	113	114	113	114	234	225	216	190	167
Oregon	98	99	99	102	100	699	699	636	591	550
California	92	91	91	92	92	1,416	1,388	1,388	1,263	1,238
48 States	94	94	93	92	91	22,406	22,193	21,245	20,021	18,715
Alaska	---	83	71	71	62	---	6	7	7	8
Hawaii	---	---	---	---	---	---	---	---	---	---
United States	94	94	93	92	91	22,406	22,199	21,252	20,028	18,723

Table 8.--Wool: Number sheep shorn and average weight per fleece, by States, 1960-64

State	Sheep shorn					Average weight per fleece				
	1960	1961	1962	1963	1964	1960	1961	1962	1963	1964
	1,000	1,000	1,000	1,000	1,000	Lbs.	Lbs.	Lbs.	Lbs.	Lbs.
	head	head	head	head	head					
Maine	32	32	30	31	26	6.8	7.0	6.9	6.9	7.1
New Hampshire	7.2	6.9	6.9	6.1	5.6	6.7	6.7	6.7	6.8	6.7
Vermont	11	10	9.0	9.0	7.8	7.3	7.3	7.5	7.4	7.6
Massachusetts	11	11	11	11	10	7.0	7.1	7.2	7.1	7.1
Rhode Island	2.0	2.1	2.2	2.2	2.3	6.8	6.6	7.0	6.5	6.8
Connecticut	6.3	6.5	6.6	6.6	5.8	6.6	7.0	6.8	6.7	7.1
New York	136	122	120	111	108	7.6	7.6	7.6	7.8	7.8
New Jersey	13	13	13	11	10	7.2	7.0	7.0	7.0	7.0
Pennsylvania	230	216	210	187	174	7.3	7.2	7.3	7.4	7.3
Ohio	1,056	956	898	814	758	8.1	8.1	8.2	8.4	8.7
Indiana	434	412	402	332	311	7.7	7.7	7.7	7.7	7.9
Illinois	634	610	598	564	536	7.6	7.5	7.3	7.2	7.3
Michigan	368	340	334	297	279	8.3	8.4	8.4	8.3	8.6
Wisconsin	206	199	193	179	167	7.9	7.9	7.7	7.8	8.0
Minnesota	837	831	825	732	685	7.9	7.9	8.0	7.8	7.7
Iowa	1,430	1,334	1,316	1,112	1,178	7.5	7.4	7.4	7.7	7.4
Missouri	704	660	598	477	425	7.7	7.8	7.6	7.7	7.9
North Dakota	584	610	566	537	473	9.6	9.4	9.8	9.5	9.6
South Dakota	1,587	1,612	1,532	1,498	1,526	9.4	9.8	9.5	9.2	8.6
Nebraska	723	653	639	530	499	6.9	7.4	7.4	7.5	7.5
Kansas	599	675	658	606	537	8.1	8.0	8.0	7.9	8.1
Delaware	4.4	3.7	3.5	3.0	2.4	6.5	6.5	6.5	7.0	7.2
Maryland	33	31	26	24	21	6.5	6.8	6.6	6.8	6.9
Virginia	293	284	262	238	217	5.7	5.9	5.7	5.9	6.0
West Virginia	255	250	233	219	195	5.5	5.5	5.5	5.6	5.6
North Carolina	49	48	42	34	28	5.7	6.0	6.3	6.1	6.2
South Carolina	9.7	8.0	7.2	5.2	4.7	6.4	6.5	6.5	6.4	6.6
Georgia	24	19	16	12	8.9	6.9	6.7	6.9	6.0	6.2
Florida	6.4	6.4	6.2	6.4	6.3	5.5	3.5	3.8	4.5	4.5
Kentucky	492	413	331	255	199	6.9	6.7	6.8	7.0	7.1
Tennessee	223	187	161	136	97	5.5	5.6	5.4	5.7	5.4
Alabama	30	26	19	15	12	5.8	5.8	6.1	6.0	5.6
Mississippi	62	53	41	37	27	5.8	5.5	5.3	5.0	5.0
Arkansas	39	35	28	21	16	6.7	6.5	6.7	6.7	6.8
Louisiana	79	82	63	58	48	4.6	4.3	4.5	4.6	4.4
Oklahoma	223	210	181	161	138	7.3	7.8	7.7	8.1	8.3
Texas	6,358	6,431	6,344	5,938	5,341	8.2	8.1	7.8	7.8	7.3
Montana	1,679	1,581	1,387	1,395	1,369	10.1	10.2	10.5	10.2	9.8
Idaho	1,073	1,011	944	897	818	10.5	10.3	10.5	10.5	10.3
Wyoming	2,188	2,081	1,994	2,023	1,971	10.4	10.5	10.6	10.6	9.9
Colorado	1,590	1,721	1,676	1,633	1,324	9.3	8.9	8.8	9.2	9.6
New Mexico	1,113	1,137	1,122	1,073	1,029	9.3	9.1	9.4	9.5	9.3
Arizona	447	510	468	511	508	7.2	6.7	7.2	7.1	7.3
Utah	1,203	1,163	1,127	1,123	1,095	9.9	10.0	10.0	9.9	10.0
Nevada	314	275	284	253	243	8.9	9.2	9.5	9.8	10.1
Washington	327	299	294	260	232	9.1	9.2	9.1	9.1	9.2
Oregon	913	897	848	822	761	8.3	8.1	7.8	8.0	7.8
California	2,443	2,368	2,305	2,045	2,004	8.0	7.8	7.5	7.7	7.8
48 States	31,081	30,442	29,181	27,250	25,439	8.54	8.51	8.45	8.52	8.34
Alaska	---	12	12	14	16	---	10.7	12.2	11.9	11.8
Hawaii	---	---	---	---	---	---	---	---	---	---
United States	31,081	30,454	29,193	27,264	25,455	8.54	8.51	8.45	8.53	8.34

Table 9.--Wool: Shorn wool production, by State, 1960-64

State	Production				
	1960	1961	1962	1963	1964
	1,000	1,000	1,000	1,000	1,000
	<u>lbs.</u>	<u>lbs.</u>	<u>lbs.</u>	<u>lbs.</u>	<u>lbs.</u>
Maine	218	224	207	214	185
New Hampshire	48	46	46	41	38
Vermont	80	73	68	67	59
Massachusetts	77	78	79	78	71
Rhode Island	14	14	15	14	16
Connecticut	42	46	45	44	41
New York	1,033	927	910	862	842
New Jersey	94	91	91	77	70
Pennsylvania	1,679	1,555	1,533	1,384	1,270
Ohio	8,501	7,734	7,360	6,868	6,598
Indiana	3,360	3,152	3,111	2,560	2,467
Illinois	4,787	4,582	4,376	4,075	3,915
Michigan	3,068	2,850	2,795	2,458	2,402
Wisconsin	1,637	1,575	1,493	1,390	1,338
Minnesota	6,575	6,549	6,611	5,732	5,257
Iowa	10,776	9,934	9,799	8,576	8,671
Missouri	5,393	5,133	4,540	3,671	3,359
North Dakota	5,625	5,741	5,530	5,120	4,541
South Dakota	14,941	15,828	14,595	13,751	13,187
Nebraska	4,970	4,858	4,750	3,973	3,767
Kansas	4,841	5,414	5,291	4,804	4,369
Delaware	29	24	23	21	17
Maryland	214	211	172	163	145
Virginia	1,670	1,676	1,493	1,404	1,302
West Virginia	1,403	1,375	1,282	1,226	1,092
North Carolina	279	288	265	207	174
South Carolina	62	52	47	33	31
Georgia	166	127	110	72	55
Florida	35	22	24	29	28
Kentucky	3,395	2,767	2,251	1,785	1,413
Tennessee	1,226	1,047	869	775	524
Alabama	174	151	116	90	67
Mississippi	329	292	217	185	135
Arkansas	261	228	188	141	109
Louisiana	363	353	284	267	211
Oklahoma	1,625	1,642	1,392	1,307	1,139
Texas	51,980	52,225	49,752	46,602	38,836
Montana	17,041	16,180	14,570	14,254	13,444
Idaho	11,304	10,388	9,946	9,404	8,424
Wyoming	22,839	21,933	21,056	21,535	19,513
Colorado	14,808	15,266	14,798	15,005	12,692
N. Mexico	10,368	10,364	10,557	10,157	9,537
Arizona	3,204	3,412	3,385	3,612	3,727
Utah	11,950	11,576	11,225	11,148	10,942
Nevada	2,786	2,525	2,692	2,474	2,448
Washington	2,992	2,747	2,684	2,369	2,133
Oregon	7,596	7,230	6,593	6,559	5,918
California	19,419	18,528	17,254	15,696	15,625
48 States	265,277	259,033	246,490	232,279	212,144
Alaska	---	128	146	167	189
Hawaii	---	---	---	---	---
United States	265,277	259,161	246,636	232,446	212,333

Table 10.--Wool: Price per pound and total value, by States, 1960-64

State	Price per pound					Value				
	1960	1961	1962	1963	1964	1960	1961	1962	1963	1964
	Cents	Cents	Cents	Cents	Cents	1,000 dollars	1,000 dollars	1,000 dollars	1,000 dollars	1,000 dollars
Maine	52	52	54	58	61	113	116	112	124	113
New Hampshire	48	48	52	54	58	23	22	24	22	22
Vermont	49	50	52	53	58	39	36	35	36	34
Massachusetts	49	51	54	55	60	38	40	43	43	43
Rhode Island	50	52	55	56	60	7	7	8	8	10
Connecticut	48	49	52	53	58	20	23	23	23	24
New York	48	48	53	54	61	496	445	482	465	514
New Jersey	51	50	52	56	63	48	46	47	43	44
Pennsylvania	49	48	51	53	61	823	746	782	734	775
Ohio	44	44	49	50	57	3,740	3,403	3,606	3,434	3,761
Indiana	44	43	47	49	54	1,478	1,355	1,462	1,254	1,332
Illinois	44	42	47	48	54	2,106	1,924	2,057	1,956	2,114
Michigan	46	45	51	51	57	1,411	1,282	1,425	1,254	1,369
Wisconsin	47	46	49	52	57	769	724	732	723	763
Minnesota	44	44	49	49	56	2,893	2,882	3,239	2,809	2,944
Iowa	43	42	47	47	55	4,634	4,172	4,606	4,031	4,769
Missouri	44	42	46	48	56	2,373	2,156	2,088	1,762	1,881
North Dakota	44	43	48	48	55	2,475	2,469	2,654	2,458	2,498
South Dakota	43	43	48	49	56	6,425	6,806	7,006	6,738	7,385
Nebraska	39	40	44	45	51	1,938	1,943	2,090	1,788	1,921
Kansas	36	37	40	40	45	1,743	2,003	2,116	1,922	1,966
Delaware	50	46	50	53	63	14	11	12	11	11
Maryland	49	47	51	52	61	105	99	88	85	88
Virginia	56	57	59	58	71	935	955	881	814	924
West Virginia	52	54	56	56	68	730	742	718	687	743
North Carolina	52	53	56	55	67	145	153	148	114	117
South Carolina	47	49	52	52	60	29	25	24	17	19
Georgia	45	44	43	50	56	75	56	47	36	31
Florida	37	37	39	39	39	13	8	9	11	11
Kentucky	50	50	52	53	57	1,698	1,384	1,171	946	805
Tennessee	50	50	52	52	59	613	524	452	403	309
Alabama	49	47	50	50	57	85	71	58	45	38
Mississippi	47	45	47	51	55	155	131	102	94	74
Arkansas	41	41	44	45	49	107	93	83	63	52
Louisiana	45	43	45	47	52	163	152	128	125	110
Oklahoma	35	35	39	40	44	569	575	543	523	501
Texas	42	45	48	51	52	21,832	23,501	23,881	23,767	20,195
Montana	43	42	49	50	55	7,328	6,796	7,139	7,127	7,394
Idaho	41	42	49	50	57	4,635	4,363	4,874	4,702	4,802
Wyoming	39	41	47	46	51	8,907	8,993	9,896	9,906	9,952
Colorado	41	43	49	46	50	6,071	6,564	7,251	6,902	6,346
New Mexico	38	42	47	44	49	3,940	4,353	4,962	4,469	4,673
Arizona	35	37	39	38	43	1,121	1,262	1,320	1,373	1,603
Utah	39	41	48	46	50	4,660	4,746	5,388	5,128	5,471
Nevada	37	41	47	44	51	1,050	1,035	1,292	1,039	1,218
Washington	42	41	46	47	53	1,257	1,126	1,235	1,137	1,130
Oregon	45	43	49	50	60	3,413	3,109	3,231	3,280	3,551
California	42	43	46	50	53	8,156	7,967	7,937	7,848	8,281
48 States	42.0	43.0	47.7	49.4	53.2	111,412	111,394	117,507	112,329	112,762
Alaska	---	40	49	50	61	---	51	72	97	115
Hawaii	---	---	---	---	---	---	---	---	---	---
United States	42.0	43.0	47.7	49.4	53.2	111,412	111,445	117,579	112,426	112,877

Table 11.--Mohair: Number goats clipped, production, and value, by States, 1960-64

State	Goats clipped 1/					Weight per clip				
	1960	1961	1962	1963	1964	1960	1961	1962	1963	1964
	1,000	1,000	1,000	1,000	1,000					
	<u>head</u>	<u>head</u>	<u>head</u>	<u>head</u>	<u>head</u>	<u>Pounds</u>	<u>Pounds</u>	<u>Pounds</u>	<u>Pounds</u>	<u>Pounds</u>
Missouri	37	36	31	32	34	4.2	3.7	4.3	4.2	4.0
Texas	3,711	3,841	4,049	4,164	4,363	6.4	6.7	6.5	6.8	6.6
New Mexico ..	48	53	59	61	65	4.6	4.8	4.7	4.6	4.5
Arizona	63	59	66	72	76	3.6	3.5	4.0	4.1	4.0
Utah	4	5	5	5	4	2.5	2.8	3.2	3.4	3.5
Oregon	18	20	19	21	17	4.2	4.0	4.1	4.4	4.4
California ..	7	7	7	8	9	4.2	4.4	4.1	4.5	5.0
Total	3,888	4,021	4,236	4,363	4,568	6.3	6.6	6.4	6.6	6.5

State	Production				
	1960	1961	1962	1963	1964
	1,000	1,000	1,000	1,000	1,000
	<u>pounds</u>	<u>pounds</u>	<u>pounds</u>	<u>pounds</u>	<u>pounds</u>
Missouri	155	133	133	134	136
Texas	23,750	25,690	26,418	28,153	28,872
New Mexico ..	221	255	277	282	292
Arizona	226	208	264	293	302
Utah	10	14	16	17	14
Oregon	76	80	78	92	75
California ..	29	31	29	36	45
Total	24,467	26,411	27,215	29,007	29,736

State	Price per pound					Value				
	1960	1961	1962	1963	1964	1960	1961	1962	1963	1964
						1,000	1,000	1,000	1,000	1,000
	<u>Cents</u>	<u>Cents</u>	<u>Cents</u>	<u>Cents</u>	<u>Cents</u>	<u>dollars</u>	<u>dollars</u>	<u>dollars</u>	<u>dollars</u>	<u>dollars</u>
Missouri	91	70	51	62	74	141	93	68	83	101
Texas	90	86	72	89	95	21,375	22,093	19,021	25,056	27,428
New Mexico ..	81	76	55	67	74	179	194	152	189	216
Arizona	72	72	47	50	69	163	150	124	146	208
Utah	44	43	48	51	67	4	6	8	9	9
Oregon	70	70	51	62	69	53	56	40	57	52
California ..	75	74	57	61	86	22	23	17	22	39
Total	89.7	85.6	71.4	88.1	94.3	21,937	22,615	19,430	25,562	28,053

1/ In States where goats are clipped twice a year, the number clipped is the sum of goats and kids clipped in the spring and kids clipped in the fall.

Table 12.--Early lamb crop: Number early lambs March 1, 3 States 1960-64 1/

Year	Kansas		Texas		California		Total
	1,000	head	1,000	head	1,000	head	
1960	---	---	830	---	1,147	---	2/ 1,977
1961	177	---	779	---	1,137	---	2,093
1962	213	---	830	---	1,149	---	2,192
1963	216	---	741	---	1,069	---	2,026
1964	178	---	671	---	1,036	---	1,885

1/ Early lambs are born between October 1 and March 1 and expected to be marketed by early summer.

2/ 2-State total. Kansas not available.

OFFICIAL BUSINESS

CONTENTS

	<u>Page</u>
Comments.....	2
Tables:	
1. Calf and lamb crops: Number calves born and number born as a percentage of cows 2 years old and older and number of lambs saved as percentage of ewes 1 year old and older, United States, 1960-64.....	3
2. Wool: Number of sheep shorn, production and value, and pulled wool production, United States, 1960-64.....	3
3. Mohair: Number goats clipped, production, and value of sales, seven States, 1960-64.....	3
4. Calf crop: Number calves born, by States, 1960-64.....	4
5. Calf crop: Calves born as percentage of cows and heifers 2 years old and older and number of cows 2 years old and older January 1, by States, 1960-64.....	5
6. Lamb crop: Number lambs saved, 1960-64.....	6
7. Lamb crop: Lambs saved as percentage of ewes 1 year old and older January 1 and number of ewes 1 year old and older January 1, by States, 1960-64.....	7
8. Wool: Number sheep shorn and average weight per fleece, by States, 1960-64.....	8
9. Wool: Shorn wool production, by States, 1960-64.....	9
10. Wool: Price per pound and total value, by States, 1960-64.....	10
11. Mohair: Number goats clipped, production, and value, by States, 1960-64.....	11
12. Early lamb crop: Number early lambs March 1, 3 States, 1960-64.....	11

END