

SB-599 (1979)

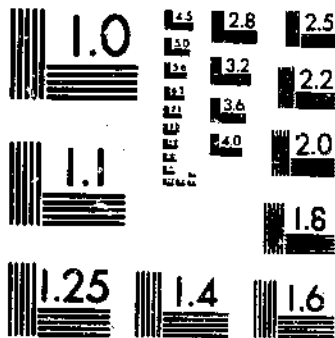
USDA STATISTICAL BULLETINS

UPDATA

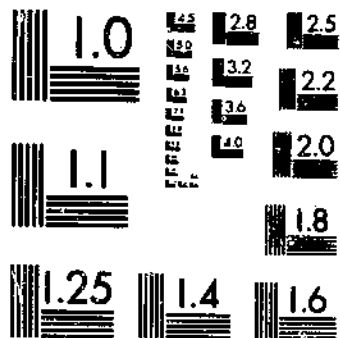
RICE STOCKS ON AND OFF FARMS: FINAL ESTIMATES FOR 1968-75

1 OF 1

START



MICROCOPY RESOLUTION TEST CHART
NATIONAL BUREAU OF STANDARDS-1963-A



MICROCOPY RESOLUTION TEST CHART
NATIONAL BUREAU OF STANDARDS-1963-A

R
630.5
US3-13

S7

RICE STOCKS

On and Off Farms

Final Estimates for 1968-75

U. S. DEPOSITORY

APR 6 1978

Los Angeles Public Library



Crop
Reporting
Board

U.S. Department
of Agriculture
Washington, D.C.
20250

Statistical Bulletin No. 599
March 1978

C O N T E N T S

	<u>PAGE</u>
Rough Rice Stocks, by Position, United States, 1968-75	3
Milled Rice Stocks, by Position, United States, 1968-75	4
Rough and Milled Rice Stocks, by Position, by States, 1968-75	5
Rough and Milled Rice Stocks, by Length of Grain, in all Positions, by California and Other States, August 1972-75	9

RICE STOCKS

On and Off Farms

Final Estimates for 1968-75

This bulletin presents the final 1968-75 estimates of rice stocks on and off farms for the six major producing States, Arkansas, California, Louisiana, Mississippi, Missouri, and Texas. The report continues the program of reviewing and revising estimates of rough and milled rice stocks by positions following each 5-year Census of Agriculture. Estimates for previous years are available in Statistical Bulletin No. 429.

On-farm rice stocks data represent a percentage of actual production and the revisions in this publication reflect revisions to production estimates for 1969-74 as reported in Statistical Bulletin No. 582 issued December 1977.

Off-farm stock estimates were originally based on surveys of rice millers and warehousemen and reported periodically by the Crop Reporting Board.

TABLE 1. ROUGH RICE: STOCKS BY POSITION, UNITED STATES, SPECIFIED DATES, 1968-75

DATE	ON FARMS OR IN FARM WAREHOUSES	AT MILLS AND IN ATTACHED WAREHOUSES	IN WAREHOUSES NOT ATTACHED TO MILLS	TOTAL MILLS AND WAREHOUSES	IN PORTS OR IN TRANSIT	TOTAL ALL POSITIONS
1,000 CWT						
1968						
JAN 1	9,585	16,925	30,324	47,249	0	56,834
APR 1	2,491	10,932	13,446	24,378	2	26,871
AUG 1	120	2,234	1,105	3,339	0	3,459
OCT 1	0	183	85	268	0	268
1969						
JAN 1	14,587	18,112	34,962	53,074	26	67,687
APR 1	9,512	14,681	21,910	36,591	17	46,120
AUG 1	332	4,295	7,815	12,110	51	12,493
OCT 1	0	1,529	5,739	7,268	12	7,280
1970						
JAN 1	10,536	16,854	36,348	53,202	91	63,829
APR 1	4,865	12,333	26,744	39,077	30	43,962
AUG 1	242	4,955	7,890	12,845	128	13,215
OCT 1	0	974	6,754	7,728	6	7,734
1971						
JAN 1	10,121	13,388	35,877	49,265	11	59,397
APR 1	3,335	10,416	21,556	31,972	29	35,336
AUG 1	203	4,520	10,169	14,689	0	14,692
OCT 1	0	1,606	5,933	7,539	26	7,565
1972						
JAN 1	10,924	12,999	36,750	49,749	27	60,700
APR 1	3,531	8,746	20,347	29,093	11	32,635
AUG 1	133	2,681	5,604	8,285	6	8,424
OCT 1 1/	0	284	32	316	0	316
1973						
JAN 1	4,714	13,703	30,427	44,130	0	48,844
APR 1	1,476	9,142	13,638	22,780	11	24,267
AUG 1	94	1,931	914	2,845	0	2,939
OCT 1 1/	0	34	5	39	0	39
1974						
JAN 1	7,729	13,651	30,783	44,434	1	52,164
APR 1	1,536	10,048	15,113	25,161	14	26,711
AUG 1	77	2,589	1,278	3,867	10	3,954
OCT 1 1/	0	70	31	101	0	101
1975						
JAN 1	13,608	15,177	39,769	54,946	160	68,714
APR 1	2,902	10,579	20,823	31,402	24	34,328
AUG 1	63	1,455	2,462	3,917	70	4,050
OCT 1 1/	15	229	564	793	0	808

1/ CALIF ONLY.

TABLE 2. MILLED RICE: STOCKS BY POSITION, UNITED STATES, SPECIFIED DATES, 1968-75

DATE	AT MILLS AND IN ATTACHED WAREHOUSES	IN WAREHOUSES NOT ATTACHED TO MILLS	TOTAL MILLS AND WAREHOUSES	IN PORTS OR IN TRANSIT	TOTAL ALL POSITIONS
			1,000 CWT		
1968					
JAN 1	1,977	501	2,478	1,932	4,410
APR 1	1,836	152	1,988	1,655	3,643
AUG 1	1,103	0	1,103	1,315	2,418
OCT 1	607	24	631	420	1,051
1969					
JAN 1	3,151	22	3,173	1,620	4,793
APR 1	3,754	535	4,289	1,611	5,900
AUG 1	1,696	21	1,717	1,006	2,723
OCT 1	384	3	387	703	1,090
1970					
JAN 1	1,699	3	1,702	1,346	3,048
APR 1	2,007	48	2,055	1,004	3,059
AUG 1	1,743	86	1,829	499	2,328
OCT 1	446	55	501	336	837
1971					
JAN 1	2,606	155	2,761	1,788	4,549
APR 1	3,684	33	3,717	769	4,486
AUG 1	2,273	58	2,331	421	2,752
OCT 1	1,110	240	1,350	503	1,853
1972					
JAN 1	2,666	940	3,506	2,160	5,666
APR 1	2,548	336	2,884	1,743	4,627
AUG 1	1,966	67	2,033	163	2,196
OCT 1 1/2	147	0	147	0	147
1973					
JAN 1	1,787	426	2,213	2,086	4,299
APR 1	3,479	52	3,531	1,354	4,885
AUG 1	1,389	21	1,410	196	1,606
OCT 1 1/2	67	0	67	0	67
1974					
JAN 1	2,650	127	2,777	1,117	3,894
APR 1	2,459	12	2,471	2,783	5,254
AUG 1	2,258	22	2,280	523	2,803
OCT 1 1/2	137	0	137	0	137
1975					
JAN 1	2,959	634	3,593	699	4,292
APR 1	2,961	22	2,983	1,286	4,269
AUG 1	1,589	58	1,647	517	2,164
OCT 1 1/2	278	0	278	0	278

1/2 CALIF ONLY.

TABLE 3. ROUGH AND MILLED RICE: STOCKS BY POSITION, BY STATES, SPECIFIED DATES, 1968-75

STATE	ROUGH RICE					MILLED RICE				
	ON FARM	IN MILLS	IN WHSES.	IN PORTS	TOTAL	IN MILLS	IN WHSES.	IN PORTS	TOTAL	
	OR FARM	AND	NOT	OR IN	ALL	AND	NOT	OR IN	ALL	
WHSES.	ATTACHED	ATTACHED	TRANSIT	POSITIONS	ATTACHED	ATTACHED	TRANSIT	POSITIONS		
	WHSES.	TO MILLS	TO MILLS			WHSES.	TO MILLS			
1,000 CWT										
JAN 1, 1968										
ARK	*	*	*	0	*	*	0	*	*	
CALIF	2,999	3,292	9,507	0	15,798	413	0	73	486	
LA	1,542	3,411	5,271	0	10,224	422	476	1,121	2,019	
MISS	*	*	*	0	*	*	0	*	*	
MO	5	0	0	0	5	0	0	0	0	
TEX	2,413	3,445	7,829	0	13,687	707	25	651	1,383	
UNALL*	2,626	6,777	7,717	0	17,120	435	0	87	522	
U S	9,585	16,925	30,324	0	56,834	1,977	501	1,932	4,410	
APR 1, 1968										
ARK	*	*	*	*	*	*	0	*	*	
CALIF	882	1,671	5,417	0	7,970	267	0	457	724	
LA	220	1,517	2,315	0	4,052	443	137	657	1,237	
MISS	*	*	*	*	*	*	0	*	*	
MO	2	0	0	0	2	0	0	0	0	
TEX	381	3,170	1,113	0	4,664	684	15	500	1,199	
UNALL*	1,006	4,574	4,601	2	10,183	442	0	41	483	
U S	2,491	10,932	13,446	2	26,871	1,836	152	1,655	3,643	
AUG 1, 1968										
ARK	*	*	*	0	*	*	0	*	*	
CALIF	88	492	956	0	1,536	269	0	0	269	
LA	0	87	4	0	91	231	0	1,130	1,361	
MISS	*	*	*	0	*	*	0	*	*	
MO	0	0	0	0	0	0	0	0	0	
TEX	25	301	8	0	334	298	0	166	464	
UNALL*	7	1,354	137	0	1,498	305	0	19	324	
U S	120	2,234	1,105	0	3,459	1,103	0	1,315	2,418	
OCT 1, 1968										
ARK	0	*	*	0	*	*	0	*	*	
CALIF	0	103	34	0	137	426	0	0	426	
LA	0	0	1	0	1	39	0	224	263	
MISS	0	*	*	0	*	*	0	*	*	
MO	0	0	0	0	0	0	0	0	0	
TEX	0	24	3	0	27	4	24	174	202	
UNALL*	0	56	47	0	103	138	0	22	160	
U S	0	183	85	0	268	607	24	420	1,051	
JAN 1, 1969										
ARK	*	*	*	*	*	*	0	*	*	
CALIF	3,451	3,198	11,603	0	18,252	1,057	0	0	1,057	
LA	5,223	3,657	5,714	17	14,616	512	0	832	1,344	
MISS	*	*	*	*	*	*	0	*	*	
MO	5	0	0	0	6	0	0	0	0	
TEX	2,716	4,418	8,029	0	15,163	953	22	735	1,710	
UNALL*	3,186	6,839	9,616	9	19,650	629	0	53	682	
U S	14,587	18,112	34,962	26	67,687	3,151	22	1,620	4,793	
APR 1, 1969										
ARK	*	*	*	0	*	*	0	*	*	
CALIF	1,610	2,194	5,117	0	8,921	1,042	0	0	1,042	
LA	3,921	3,032	4,369	17	11,339	613	489	727	1,829	
MISS	*	*	*	0	*	*	0	*	*	
MO	4	0	0	0	4	0	0	0	0	
TEX	2,173	4,118	5,032	0	11,323	1,237	46	853	2,136	
UNALL*	1,804	5,337	7,392	0	14,533	862	0	31	893	
U S	9,512	14,681	21,910	17	46,120	3,754	535	1,611	5,900	
AUG 1, 1969										
ARK	*	*	*	*	*	*	0	*	*	
CALIF	115	689	973	0	1,777	178	0	0	178	
LA	131	417	702	1	1,251	361	2	553	916	
MISS	*	*	*	*	*	*	0	*	*	
MO	0	0	0	0	0	0	0	0	0	
TEX	27	831	4,328	32	5,218	682	19	379	1,080	
UNALL*	59	2,358	1,812	18	4,247	475	0	74	549	
U S	332	4,295	7,815	51	12,493	1,696	21	1,006	2,723	
OCT 1, 1969										
ARK	0	*	*	*	*	*	0	*	*	
CALIF	0	202	123	0	325	135	0	0	135	
LA	0	118	108	0	226	41	2	512	555	
MISS	0	*	*	*	*	*	0	*	*	
MO	0	0	0	0	0	0	0	0	0	
TEX	0	574	4,262	0	4,836	16	1	147	164	
UNALL*	0	535	1,246	12	1,893	192	0	44	236	
U S	0	1,529	5,739	12	7,280	384	3	703	1,090	

SEE FOOTNOTE PAGE 8.

CONTINUED

TABLE 3. ROUGH AND MILLED RICE: STOCKS BY POSITION, BY STATES, SPECIFIED DATES, 1968-75-CONTINUED

STATE	ROUGH RICE					MILLED RICE				
	IN	IN	IN	IN	TOTAL	IN	IN	IN	TOTAL	
	ON FARM	MILLS	WHSSES.	IN PORTS	ALL	MILLS	WHSSES.	IN PORTS	ALL	
OR FARM	AND	NOT	OR IN	POSITIONS	AND	NOT	OR IN	POSITIONS		
WHSSES.	ATTACHED	ATTACHED	TRANSIT		ATTACHED	ATTACHED	TRANSIT			
	WHSSES.	TO MILLS			WHSSES.	TO MILLS				
1,000 CWT										
JAN 1, 1970										
ARK	*	*	*	0	*	*	0	*	*	
CALIF	3,224	3,374	12,347	0	18,945	186	0	0	186	
LA	1,711	2,723	3,389	0	7,823	463	3	882	1,348	
MISS	*	*	*	0	*	*	0	*	*	
MO	5	0	0	0	5	0	0	0	0	
TEX	3,030	4,263	10,578	91	17,962	593	0	384	977	
UNALL*	2,566	6,494	10,034	0	19,094	457	0	80	537	
U S	10,536	16,854	36,348	91	63,829	1,699	3	1,346	3,048	
APR 1, 1970										
ARK	*	*	*	*	*	*	0	*	*	
CALIF	1,719	3,097	11,063	0	15,879	292	0	0	292	
LA	535	1,670	1,695	0	3,900	439	2	378	819	
MISS	*	*	*	*	*	*	0	*	*	
MO	2	0	0	0	2	0	0	0	0	
TEX	1,082	3,439	7,489	7	12,017	706	46	556	1,308	
UNALL*	1,517	4,127	6,497	23	12,164	570	0	70	640	
U S	4,855	12,333	26,744	30	43,962	2,007	48	1,004	3,059	
AUG 1, 1970										
ARK	*	*	*	0	*	*	0	*	*	
CALIF	215	1,835	2,906	0	4,956	776	0	0	776	
LA	0	29	1	0	30	222	1	15	238	
MISS	*	*	*	0	*	*	0	*	*	
MO	0	0	0	0	0	0	0	0	0	
TEX	22	1,143	3,892	128	5,185	434	85	415	934	
UNALL*	5	1,948	1,091	0	3,044	311	0	69	380	
U S	242	4,955	7,890	128	13,215	1,743	86	499	2,328	
OCT 1, 1970										
ARK	0	*	*	*	*	*	0	*	*	
CALIF	0	120	2,240	0	2,360	224	0	0	224	
LA	0	0	3	0	3	4	1	200	205	
MISS	0	*	*	*	*	*	0	*	*	
MO	0	0	0	0	0	0	0	0	0	
TEX	0	564	3,591	0	4,155	24	54	88	166	
UNALL*	0	290	920	6	1,216	194	0	48	242	
U S	0	974	6,754	6	7,734	446	55	336	837	
JAN 1, 1971										
ARK	*	*	*	*	*	*	0	*	*	
CALIF	1,887	655	14,219	0	16,761	413	0	0	413	
LA	2,652	2,581	4,003	0	9,236	514	1	799	1,314	
MISS	*	*	*	*	*	*	0	*	*	
MO	2	0	0	0	2	0	0	0	0	
TEX	2,942	4,517	8,818	2	16,279	1,114	154	882	2,150	
UNALL*	2,638	5,635	8,837	9	17,119	565	0	107	672	
U S	10,121	13,388	35,877	11	59,397	2,606	155	1,788	4,549	
APR 1, 1971										
ARK	*	*	*	0	*	*	0	*	*	
CALIF	943	639	10,852	0	12,434	959	0	0	959	
LA	306	2,210	986	7	3,509	461	1	255	737	
MISS	*	*	*	*	*	*	0	*	*	
MO	2	0	0	0	2	0	0	0	0	
TEX	525	4,475	4,955	0	9,955	1,468	32	412	1,912	
UNALL*	1,559	3,092	4,763	22	9,435	776	0	102	878	
U S	3,335	10,416	21,556	29	35,335	3,684	33	769	4,486	
AUG 1, 1971										
ARK	*	*	*	0	*	*	0	*	*	
CALIF	94	245	4,732	0	4,471	741	0	0	741	
LA	0	123	117	0	240	334	1	174	509	
MISS	*	*	*	0	*	*	0	*	*	
MO	0	0	0	0	0	0	0	0	0	
TEX	21	1,109	3,547	0	4,677	755	57	208	1,020	
UNALL*	88	3,043	2,373	0	5,504	443	0	39	482	
U S	203	4,520	10,169	0	14,892	2,275	58	421	2,752	
OCT 1, 1971										
ARK	0	*	*	*	*	*	*	*	*	
CALIF	0	232	2,451	0	2,683	761	0	180	941	
LA	0	34	33	0	67	11	1	74	86	
MISS	0	*	*	*	*	*	*	*	*	
MO	0	0	0	0	0	0	0	0	0	
TEX	0	517	1,430	19	1,966	191	234	185	610	
UNALL*	0	823	2,019	7	2,849	147	5	64	216	
U S	0	1,506	5,933	26	7,565	1,110	240	503	1,853	

SEE FOOTNOTE PAGE 8.

CONTINUED

TABLE 3. ROUGH AND MILLED RICE: STOCKS BY POSITION, BY STATES, SPECIFIED DATES, 1968-75-CONTINUED

STATE	ROUGH RICE					MILLED RICE				
	ON FARM	IN MILLS	IN WHSES.	IN PORTS	TOTAL	IN MILLS	IN WHSES.	IN PORTS	TOTAL	
	OR FARM	AND	NOT	OR IN	ALL	AND	NOT	OR IN	ALL	
	WHSES.	ATTACHED	ATTACHED	TRANSIT	POSITIONS	ATTACHED	ATTACHED	TRANSIT	POSITIONS	
	WHSES.	TO MILLS				WHSES.	TO MILLS			
1,000 CWT										
JAN 1, 1972										
ARK	1,225	7,390	9,252	13	17,880	*	0	*	*	
CALIF	1,721	879	11,084	0	13,684	430	0	0	430	
LA	2,777	2,740	4,425	6	9,948	409	118	1,263	1,790	
MISS	1,619	0	1,340	0	2,959	*	0	*	*	
MO	2	0	0	0	2	0	0	0	0	
TEX	3,580	1,990	10,649	8	16,227	1,338	722	766	2,826	
UNALL*	0	0	0	0	0	489	0	131	620	
U S	10,924	12,999	36,750	27	60,700	2,666	840	2,160	5,666	
APR 1, 1972										
ARK	557	5,486	5,102	0	11,145	*	0	*	*	
CALIF	688	830	8,443	0	9,961	643	0	0	643	
LA	397	1,037	1,317	0	2,751	371	115	986	1,472	
MISS	1,290	0	1,150	0	2,440	*	0	*	*	
MO	2	0	0	0	2	0	0	0	0	
TEX	597	1,393	4,335	11	6,336	804	221	637	1,662	
UNALL*	0	0	0	0	0	730	0	120	850	
U S	3,531	8,746	20,347	11	32,635	2,548	336	1,743	4,627	
AUG 1, 1972										
ARK	0	2,039	560	5	2,604	*	0	*	*	
CALIF	86	367	3,171	0	3,624	951	0	0	951	
LA	0	73	14	0	87	229	1	20	250	
MISS	23	0	1,130	0	1,153	*	0	*	*	
MO	0	0	0	0	0	0	0	0	0	
TEX	24	202	729	1	956	385	66	120	571	
UNALL*	0	0	0	0	0	401	0	23	424	
U S	133	2,681	5,604	6	8,424	1,966	67	163	2,196	
OCT 1, 1972 1/										
CALIF	0	284	32	0	316	147	0	0	147	
JAN 1, 1973										
ARK	1,097	5,944	7,739	0	14,780	*	0	*	*	
CALIF	2,075	914	11,756	0	14,745	294	0	0	294	
LA	499	2,065	4,520	0	7,084	342	57	1,270	1,669	
MISS	488	19	729	0	1,236	*	0	*	*	
MO	2	0	0	0	2	0	0	0	0	
TEX	553	4,761	5,683	0	10,997	629	369	737	1,735	
UNALL*	0	0	0	0	0	522	0	79	601	
U S	4,714	13,703	30,427	0	48,844	1,787	426	2,086	4,299	
APR 1, 1973										
ARK	439	4,071	3,149	7	7,666	*	0	*	*	
CALIF	755	696	6,309	0	7,760	1,311	0	0	1,311	
LA	100	832	1,765	0	2,697	281	1	844	1,126	
MISS	70	8	281	1	360	*	0	*	*	
MO	1	0	0	0	1	0	0	0	0	
TEX	111	3,535	2,134	3	5,783	1,084	51	404	1,539	
UNALL*	0	0	0	0	0	803	0	106	909	
U S	1,476	9,142	13,638	11	24,267	3,479	52	1,354	4,885	
AUG 1, 1973										
ARK	0	1,324	114	0	1,438	*	0	*	*	
CALIF	94	457	778	0	1,329	490	0	0	490	
LA	0	24	10	0	34	131	0	76	207	
MISS	0	0	11	0	11	*	0	*	*	
MO	0	0	0	0	0	0	0	0	0	
TEX	0	126	1	0	127	399	21	64	484	
UNALL*	0	0	0	0	0	369	0	56	425	
U S	94	1,931	914	0	2,939	1,389	21	196	1,606	
OCT 1, 1973 1/										
CALIF	0	34	5	0	39	67	0	0	67	

SEE FOOTNOTES ON PAGE 8.

CONTINUED

TABLE 3. ROUGH AND MILLED RICE: STOCKS BY POSITION, BY STATES, SPECIFIED DATES, 1968-75-CONTINUED

STATE	ROUGH RICE					MILLED RICE				
	ON FARM OR FARM WHSES.	IN MILLS AND ATTACHED WHSES.	IN WHSES. NOT ATTACHED TO MILLS	IN PORTS OR IN TRANSIT	TOTAL ALL POSITIONS	IN MILLS AND ATTACHED WHSES.	IN WHSES. NOT ATTACHED TO MILLS	IN PORTS OR IN TRANSIT	TOTAL ALL POSITIONS	
1,000 CWT										
JAN 1, 1974										
ARK	2,161	6,505	7,453	1	16,120	*	0	*	*	
CALIF	1,239	833	10,907	0	12,979	612	0	0	612	
LA	1,925	1,497	4,734	0	8,156	271	61	542	874	
MISS	961	0	467	0	1,428	*	0	*	*	
MO	6	0	0	0	6	0	0	0	0	
TEX	1,437	4,816	7,222	0	13,475	959	66	313	1,338	
UNALL*	0	0	0	0	0	808	0	262	1,070	
U S	7,729	13,651	30,783	1	52,164	2,650	127	1,117	3,894	
APR 1, 1974										
ARK	712	4,794	3,215	0	8,721	*	*	*	*	
CALIF	341	641	6,972	0	7,954	573	0	0	573	
LA	293	1,495	1,803	0	3,591	374	0	2,080	2,454	
MISS	121	0	263	1	385	*	*	*	*	
MO	4	0	0	0	4	0	0	0	0	
TEX	65	3,118	2,860	13	6,056	801	11	448	1,260	
UNALL*	0	0	0	0	0	711	1	255	967	
U S	1,536	10,048	15,113	14	26,711	2,459	12	2,783	5,254	
AUG 1, 1974										
ARK	0	1,972	12	0	1,984	*	0	*	*	
CALIF	13	247	1,090	0	1,350	729	0	0	729	
LA	55	153	23	0	231	281	0	309	590	
MISS	9	0	51	0	60	*	0	*	*	
MO	0	0	0	0	0	0	0	0	0	
TEX	0	217	102	10	329	478	22	110	610	
UNALL*	0	0	0	0	0	770	0	104	874	
U S	77	2,589	1,278	10	3,954	2,258	22	523	2,803	
OCT 1, 1974 1/										
CALIF	0	70	31	0	101	137	0	0	137	
JAN 1, 1975										
ARK	5,078	6,849	9,541	8	21,476	*	0	*	*	
CALIF	1,950	1,109	14,502	0	17,561	686	0	0	686	
LA	3,258	2,548	5,146	0	10,952	321	611	170	1,102	
MISS	1,535	0	887	49	2,471	*	0	*	*	
MO	272	0	0	0	272	0	0	0	0	
TEX	1,515	4,671	9,693	103	15,982	969	23	456	1,448	
UNALL*	0	0	0	0	0	983	0	73	1,056	
U S	13,608	15,177	39,769	150	68,714	2,959	634	699	4,292	
APR 1, 1975										
ARK	1,026	4,742	5,269	22	11,059	*	*	*	*	
CALIF	1,093	794	9,466	0	11,353	1,174	0	0	1,174	
LA	266	1,977	1,778	0	4,021	348	0	853	1,201	
MISS	142	0	250	0	392	*	*	*	*	
MO	54	0	0	0	54	0	0	0	0	
TEX	321	3,066	4,060	2	7,449	807	4	363	1,174	
UNALL*	0	0	0	0	0	632	18	70	720	
U S	2,902	10,579	20,823	24	34,328	2,961	22	1,286	4,269	
AUG 1, 1975										
ARK	11	1,119	*	70	*	571	0	77	648	
CALIF	47	267	1,763	0	2,077	535	0	0	535	
LA	1	53	11	0	65	140	8	388	536	
MISS	3	0	*	0	*	0	0	0	0	
MO	1	0	0	0	1	0	0	0	0	
TEX	0	16	561	0	577	343	50	52	445	
UNALL*	0	0	127	0	1,330	0	0	0	0	
U S	63	1,455	2,462	70	4,050	1,589	58	517	2,164	
OCT 1, 1975 1/										
CALIF	15	229	564	0	808	278	0	0	278	

* INCLUDED IN UNALLOCATED TO AVOID DISCLOSING INDIVIDUAL OPERATIONS.
1/ BEGINNING OCT 1, 1972. DATA FOR OCT 1 AVAILABLE FOR CALIF ONLY.

END