

SP 644 (REV 03-79) USDA STATISTICAL BULLETINS
AQUACULTURE—CATFISH AND TROUT—INVENTORY AND SALES—1980

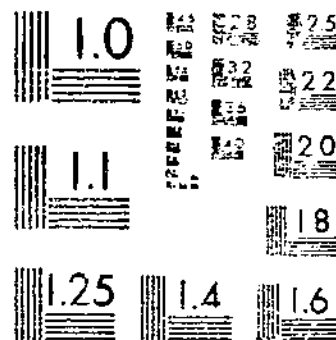
REPORT

1 OF 1

START



MICROCOPY RESOLUTION TEST CHART
NATIONAL BUREAU OF STANDARDS 1963-A



MICROCOPY RESOLUTION TEST CHART
NATIONAL BUREAU OF STANDARDS 1963-A

AQUACULTURE:

Catfish and Trout, Inventory and Sales, 1980

U. S. DEPARTMENT OF AGRICULTURE

NOV 14 1981

Los Angeles Public Lib.

United States Department of Agriculture
Economics and Statistics Service
Crop Reporting Board

Statistical Bulletin No. 644

15
A1.34 644

CONTENTS

	Page
Comments	3
CATFISH	
Number of Operations, Water Surface, and Land Utilized	4
Water Supply by Source	4
Total Sales	
Broodfish Inventory and Sales	5
Fry/Fingerling Inventory and Sales	5
Foodsize Inventory and Sales	5
Fry/Fingerling Sales Outlets	6
Foodsize Sales Outlets	7
TROUT	
Number of Operations, Water Volume, and Water Flow.....	8
Water Supply by Source	8
Egg Inventory and Sales	8
Total Sales	
Broodfish Inventory and Sales	9
Fry/Fingerling Inventory and Sales	9
Foodsize Inventory and Sales	9
Fry/Fingerling Sales Outlets	10
Foodsize Sales Outlets	11

CATFISH

Growers in ten selected States sold 43.4 million pounds (live weight) of catfish during the period January 1-July 31, 1980, according to the Crop Reporting Board. Total value of sales was \$33.8 million. Foodsize catfish comprised 93 percent of total sales weight followed by the fry/fingerling size group with 6 percent and broodfish the remaining 1 percent.

Foodsize catfish sales totaled 40.3 million pounds during January 1-July 31, 1980, with an average live weight of 1.12 pounds. Total value of sales was \$28.6 million, averaging 71 cents per pound. Processors were the main sales outlet, receiving 78 percent of the total live weight. Mississippi, the leading State in foodsize catfish sales, comprised 69 percent of total sales. Foodsize catfish inventory totaled 63.9 million pounds as of August 1, 1980. Mississippi had the largest inventory with 42.5 million pounds, followed by Alabama with 11.2 million pounds.

Fry/fingerling catfish sales totaled 2.72 million pounds during January 1-July 31, 1980, with an average live weight of .042 pounds. Total value of sales was \$4.84 million, averaging \$1.78 per pound. The primary sales outlets for fry/fingerlings were to other producers of catfish, totaling 63 percent of the live weight sold. Fry/fingerling sales was led by Mississippi with 1.20 million pounds. Inventory of fry/fingerlings as of August 1, 1980, was 11.9 million pounds or 424 million fish.

Producers were utilizing 56,200 acres of water surface on August 1, 1980, and reported intentions to expand their operations by 16,100 acres during 1981. States planning on the largest expansions are Mississippi, Alabama, and Arkansas. The primary source of water supply for raising catfish was from wells, at 73 percent, followed by "rain and/or watershed" at 15 percent.

TROUT

Trout growers in nine selected States sold a total of 28.5 million pounds (live weight) of trout valued at \$24.6 million during the period of January 1-July 31, 1980. Foodsize trout comprised 99 percent of the total pounds sold. In addition, sales of trout eggs amounted to 15,600 pounds with a value of \$481,000.

Foodsize trout sales totaled 28.2 million pounds during the period January 1-July 31, 1980, with an average live weight of 0.66 pounds. The value of sales equalled \$23.9 million, averaging 85 cents per pound. Idaho, the leading trout producing State, sold 88 percent of the total pounds. Foodsize inventory was 18.9 million pounds on August 1, 1980. The major sales outlet for foodsize trout was to processors with 88 percent of sales.

Fry/fingerling trout sales totaled 289,000 pounds (live weight) during the period January 1-July 31, 1980, with an average of .069 pounds per trout. The value of sales equalled \$717,000, averaging \$2.48 per pound. Fry/fingerling inventory was 3.47 million pounds on August 1, 1980. The major sales outlet for fry/fingerling trout was to fee and recreational establishments with 44 percent followed by 30 percent of sales to other producers.

Producers are intending to expand the current utilization of 63.0 million cubic feet of water by 4.16 million cubic feet during 1981. The primary source of water for raising trout was supplied from springs (56 percent) followed by wells (19 percent).

SURVEY PROCEDURES AND RELIABILITY

Selected State estimates of catfish and trout inventories as of August 1, 1980, and sales from January 1 through July 31 were prepared from a survey conducted in late August. A probability sample of about 1,330 was selected from a list of all known commercial producers. In addition, an area frame sample was used to estimate for producers not on the list. Information was collected by mail, telephone, and personal interviews.

Variability in survey estimates caused by sampling is measured by the relative sampling error. For this survey, sampling errors are generally less than 5 percent for combined State estimates of major inventory and sales items. Sampling errors for minor items and State estimates are somewhat higher. A sampling error of 5 percent means that two-thirds of the time the survey estimate is expected to be within 5 percent of the value obtained if all producers had been included in the survey, or be within 10 percent of the complete coverage value 95 percent of the time.

CATFISH: NUMBER OF OPERATIONS, WATER SURFACE, AND LAND UTILIZED;
AUGUST 1, 1980; SELECTED STATES

STATE	TOTAL OPERATIONS	TOTAL WATER SURFACE	TOTAL LAND UTILIZED	WATER SURFACE TO LAND UTILIZED	EXPANSION INTENDED DURING 1981	
	NUMBER	ACRES	PERCENT	NUMBER	ACRES	
ALA	524	9,440	11,740	80	163	1,950
ARK	139	7,720	9,220	84	33	1,490
CALIF	74	1,640	2,490	66	25	480
GA	39	1,170	1,190	98	5	40
LA	31	750	930	81	6	220
MISS	204	32,620	38,970	84	106	11,480
MO	71	960	1,340	72	17	130
TEX	138	1,480	2,000	74	31	170
OTH 1/	5	390	480	81	2	90
TOTAL	1,225	56,170	68,360	82	388	16,050

CATFISH: PERCENTAGE OF WATER SUPPLY BY SOURCE;
AUGUST 1, 1980; SELECTED STATES

STATE	SPRINGS	STREAMS	RIVERS	LAKES	PONDS	WELLS	RAIN OR WATERSHED	PUBLIC	TOTAL WATER SURFACE
	PERCENT								ACRES
ALA	13	10		1	2	13	61		9,440
ARK	1	4	1			87	7		7,720
CALIF	4	2/	27			32	7	30	1,640
GA	33	39			4	18	6		1,170
LA	2	2			4	86	6		750
MISS	1	1			1	95	2		32,620
MO	6	10		1	12	15	56		960
TEX	7	6	2	20	1	32	32		1,480
OTH 1/	49	35		1		11	4		390
TOTAL	4	4	1	1	1	73	15	1	56,170

1/ IDAHO AND PA COMBINED TO AVOID DISCLOSING INDIVIDUAL OPERATIONS.
2/ LESS THAN 0.5 PERCENT.

CATFISH: TOTAL SALES; BROODFISH INVENTORY (AUGUST 1, 1980) AND SALES
(JANUARY 1 - JULY 31, 1980) BY NUMBER, LIVE WEIGHT AND VALUE; SELECTED STATES

STATE	TOTAL SALES 1/			BROODFISH					
	NUMBER SOLD	LIVE WEIGHT	VALUE	INVENTORY NUMBER	SALES			AVERAGE 2/	
					NUMBER SOLD	LIVE WEIGHT	VALUE	LIVE WEIGHT	VALUE PER POUND
	THOUSANDS	1,000 POUNDS	1,000 DOLLARS	THOUSANDS	1,000 POUNDS	1,000 DOLLARS	POUNDS	DOLLARS	
ALA	14,083	5,193	4,352	175	16	46	32	2.9	.69
ARK	14,435	6,196	4,753	110	49	101	73	2.1	.72
CALIF	1,145	625	929	14	3/	1	1		1.12
GA	2,431	218	375	35	4	10	10	2.9	1.00
LA	597	260	259	14	4/	4/	4/		
MISS	59,223	29,065	20,814	475	139	188	136	1.3	.73
MO	4,301	399	626	27	1	2	3	3.3	1.37
TEXAS	2,857	912	1,169	25	9	26	43	2.7	1.67
OTH 5/	1,705	567	480	8	3	7	6	2.5	.93
TOTAL	100,777	43,435	33,757	883	221	381	304	1.7	.80

CATFISH: FRY/FINGERLING INVENTORY (AUGUST 1, 1980) AND SALES (JANUARY 1 - JULY 31, 1980)
BY NUMBER, LIVE WEIGHT AND VALUE; SELECTED STATES

STATE	INVENTORY			SALES				
	NUMBER	LIVE WEIGHT	AVERAGE WEIGHT	NUMBER SOLD	LIVE WEIGHT	VALUE	AVERAGE 2/	
							LIVE WEIGHT	VALUE PER POUND
	THOUSANDS	1,000 POUNDS	POUNDS	THOUSANDS	1,000 POUNDS	1,000 DOLLARS	POUNDS	DOLLARS
ALA	43,576	1,086	.025	9,112	447	1,225	.049	2.74
ARK	77,545	1,507	.019	9,762	387	634	.040	1.64
CALIF	6,347	90	.014	693	18	112	.026	6.34
GA	6,937	202	.029	2,245	42	199	.019	4.79
LA	4,644	374	.081	4/	4/	4/		
MISS	262,656	5,119	.019	34,215	1,203	1,741	.035	1.45
MO	8,803	212	.024	4,136	139	356	.034	2.56
TEXAS	11,267	3,245	.288	2,575	369	421	.143	1.14
OTH 5/	1,812	37	.020	1,741	110	150	.063	1.37
TOTAL	423,587	11,872	.028	64,479	2,715	4,838	.042	1.78

CATFISH: FOODSIZE INVENTORY (AUGUST 1, 1980) AND SALES (JANUARY 1 - JULY 31, 1980)
BY NUMBER, WEIGHT AND VALUE; SELECTED STATES

STATE	INVENTORY			SALES				
	NUMBER	LIVE WEIGHT	AVERAGE WEIGHT	NUMBER SOLD	LIVE WEIGHT	VALUE	AVERAGE 2/	
							LIVE WEIGHT	VALUE PER POUND
	THOUSANDS	1,000 POUNDS	POUNDS	THOUSANDS	1,000 POUNDS	1,000 DOLLARS	POUNDS	DOLLARS
ALA	15,448	11,205	.73	4,955	4,700	3,095	.95	.66
ARK	7,281	5,861	.94	4,624	5,708	4,046	1.24	.72
CALIF	732	710	.97	452	606	816	1.34	1.35
GA	447	426	.95	182	166	166	.91	1.00
LA	473	551	1.16	122	221	192	1.81	.87
MISS	59,990	42,479	.71	24,869	27,674	18,937	1.11	.68
MO	385	447	1.16	164	258	267	1.57	1.03
TEXAS	354	544	1.54	273	517	705	1.90	1.36
OTH 5/	591	644	1.09	436	489	391	1.12	.80
TOTAL	85,701	63,867	.75	36,077	40,339	28,615	1.12	.71

1/ INCLUDES SALES OF BROODFISH, FRY/FINGERLING, AND FOODSIZE.

2/ AVERAGES BASED ON UNROUNDED DATA.

3/ LESS THAN 500.

4/ INCLUDED IN OTHER STATES.

5/ INCLUDES IOAHO AND PA AND SELECTED ITEMS FOR LA.

CATFISH: FRY/FINGERLING SALES OUTLETS BY NUMBER SOLD AND LIVE WEIGHT;
JANUARY 1 - JULY 31, 1980; SELECTED STATES

STATE	OTHER PRODUCERS			LIVE HAUL			FEE FISHING/RECREATIONAL		
	NUMBER	LIVE	:PERCENT OF	NUMBER	LIVE	:PERCENT OF	NUMBER	LIVE	:PERCENT OF
	SOLD	WEIGHT	:LIVE WEIGHT	SOLD	WEIGHT	:LIVE WEIGHT	SOLD	WEIGHT	:LIVE WEIGHT
	THOUSANDS	1,000 POUNDS	THOUSANDS	1,000 POUNDS	THOUSANDS	1,000 POUNDS	THOUSANDS	1,000 POUNDS	THOUSANDS
ALA	5,666	217	49	2,430	190	42	1,016	40	9
ARK	2,615	144	37	5,966	215	56	1,024	23	6
CALIF	564	13	72	2/	2/	3/	59	2	11
GA	1,527	29	69	70	2	5	628	10	24
MISS	29,838	1,119	93	4,041	82	7	237	1	3/
MO	3,572	113	81	187	7	5	250	14	10
TEXAS	455	17	5	27	1	3/			
OTH 4/	938	63	57	644	42	38	122	5	5
TOTAL	45,175	1,715	63	13,365	539	20	3,336	95	4

OTHER SOURCES 1/				TOTAL SALES	
NUMBER	LIVE	PERCENT OF	NUMBER	LIVE	
SOLD	WEIGHT	: LIVE WEIGHT	SOLD	WEIGHT	
THOUSANDS	1,000 POUNDS		THOUSANDS	1,000 POUNDS	
ALA			9,112	447	
ARK	157	5	9,762	387	
CALIF	70	3	693	18	
GA	20	1	2,245	42	
MISS	99	1	34,215	1,203	
MO	127	5	4,136	139	
TEXAS	2,093	351	2,575	369	
OTH 4/	37	2/	1,741	110	
TOTAL	2,603	366	64,479	2,715	

1/ INCLUDES SALES TO GOVERNMENT AGENCIES WHICH WERE LESS THAN 0.5 PERCENT OF TOTAL SALES.

2/ LESS THAN 500.

3/ LESS THAN 0.5 PERCENT.

4/ INCLUDES IDAHO, PA AND LA.

CATFISH: FOODSIZE SALES OUTLETS BY NUMBER SOLD AND LIVE WEIGHT; JANUARY 1-
JULY 31, 1980; SELECTED STATES

STATE	PROCESSORS			LIVE HAUL			CONSUMERS		
	NUMBER SOLD	LIVE WEIGHT	PERCENT OF LIVE WEIGHT SOLD	NUMBER SOLD	LIVE WEIGHT	PERCENT OF LIVE WEIGHT SOLD	NUMBER SOLD	LIVE WEIGHT	PERCENT OF LIVE WEIGHT SOLD
	THOUSANDS	1,000 POUNDS		THOUSANDS	1,000 POUNDS		THOUSANDS	1,000 POUNDS	
ALA	3,433	3,533	75	212	199	4	166	211	5
ARK	2,856	3,121	55	817	1,084	19	371	690	12
CALIF				8	9	2	62	79	13
GA				1	2/	3/	31	29	17
LA	22	34	15	13	26	12	48	85	38
MISS	22,401	24,760	89	2,065	2,396	9	236	308	1
MO				27	51	20	66	109	42
TEX	1	4	1	24	37	7	128	235	45
OTH 1/				30	28	6	126	120	25
TOTAL	28,713	31,452	78	3,197	3,830	9	1,234	1,866	5
	FEE AND RECREATIONAL			OTHER PRODUCERS			GOVERNMENT AGENCIES		
	NUMBER SOLD	LIVE WEIGHT	PERCENT OF LIVE WEIGHT SOLD	NUMBER SOLD	LIVE WEIGHT	PERCENT OF LIVE WEIGHT SOLD	NUMBER SOLD	LIVE WEIGHT	PERCENT OF LIVE WEIGHT SOLD
	THOUSANDS	1,000 POUNDS		THOUSANDS	1,000 POUNDS		THOUSANDS	1,000 POUNDS	
ALA	174	238	5	943	491	10	10	10	3/
ARK	387	529	9	108	137	2			
CALIF	176	239	39	26	30	5	22	33	5
GA	146	133	80	4	4	2			
LA	14	19	9						
MISS	21	27	3/				1	1	3/
MO	49	66	26	21	29	11			
TEX	62	125	24	2	3	1			
OTH 1/	98	94	19	48	45	9	1	2	3/
TOTAL	1,127	1,470	4	1,152	739	2	34	46	3/
	OTHER SOURCES			TOTAL SALES					
	NUMBER SOLD	LIVE WEIGHT	PERCENT OF LIVE WEIGHT SOLD	NUMBER SOLD	LIVE WEIGHT				
	THOUSANDS	1,000 POUNDS		THOUSANDS	1,000 POUNDS				
ALA	17	18	3/	4,955	4,700				
ARK	85	147	3	4,624	5,708				
CALIF	158	216	36	452	606				
GA	2/	2/	3/	182	166				
LA	25	57	26	122	221				
MISS	145	182	3/	24,869	27,674				
MO	1	3	1	164	258				
TEX	56	113	22	273	517				
OTH 1/	133	200	41	436	489				
TOTAL	620	936	2	36,077	40,339				

1/ IDAHO AND PA INCLUDED IN OTHER STATES.
2/ LESS THAN 500.
3/ LESS THAN 0.5 PERCENT.

TROUT: NUMBER OF OPERATIONS, WATER VOLUME, AND WATER FLOW; AUGUST 1, 1980; SELECTED STATES

STATE	TOTAL OPERATIONS	TOTAL WATER VOLUME 1,000 CU. FT.	TOTAL FRESH WATER FLOW PER MINUTE 1,000 GALLONS	EXPANSION INTENDED DURING 1981	
				OPERATIONS TO EXPAND	WATER VOLUME
	NUMBER			NUMBER	1,000 CU. FT.
CALIF	32	9,048	213	9	3,714
GA	11	310	26	5	20
IDAHO	31	15,226	1,744	6	166
MO	6	1,539	19	2/	2/
PA	39	7,712	62	8	31
WASH	42	7,810	66	2/	2/
WIS	28	20,742	191	5	136
OTH 1/	8	574	20	3	95
TOTAL	197	62,961	2,341	36	4,162

1/ INCLUDES ALA AND ARK. INTENDED EXPANSIONS ALSO MO AND WASH.

2/ INCLUDED 'N OTHER STATES.

TROUT: PERCENTAGE OF WATER SUPPLY BY SOURCE, AUGUST 1, 1980, SELECTED STATES

STATE	SPRINGS	STREAMS	RIVERS	LAKES	PONDS	WELLS	PUBLIC	TOTAL WATER VOLUME 1,000 CU. FT.
	PERCENT							
CALIF	14	13	48		2/	25		9,048
GA	9	91				1		310
IDAHO	78	4	2	16		2/		5,226
MO	100							1,539
PA	53	29	10			8		7,712
WASH	56	39	3		1	1		7,810
WIS	55	1			1	43		20,742
OTH 1/	98	2			2/			574
TOTAL	56	12	9	4	2/	19		62,961

1/ INCLUDES ALA AND ARK.

2/ LESS THAN 0.5 PERCENT.

TROUT: EGG INVENTORY (AUGUST 1, 1980) AND SALES (JANUARY 1 - JULY 31, 1980) BY NUMBER, WEIGHT, AND VALUE; SELECTED STATES

STATE	INVENTORY			SALES				
	NUMBER	POUNDS	AVERAGE EGGS PER POUND	NUMBER SOLD	POUNDS	VALUE	AVERAGE	
	THOUSANDS	NUMBER	NUMBER	THOUSANDS	NUMBER	1,000 DOLLARS	NUMBER	DOLLARS
IDAHO	243,000	50,630	4,800	30,237	10,950	316	2,761	28.81
WASH	10,250	1,230	8,333	3/	3/	3/	3/	3/
OTH 2/	19,192	1,090	17,607	32,358	4,670	165	6,929	35.35
TOTAL	272,442	52,950	5,145	62,595	15,620	481	4,007	30.80

1/ BASED ON UNROUNDED DATA.

2/ INCLUDES ALA, ARK, CALIF, MO, PA, WIS. SALES ITEMS ALSO INCLUDE WASH.

3/ INCLUDED IN OTHER STATES.

TROUT: TOTAL SALES; BROODFISH INVENTORY (AUGUST 1, 1980) AND SALES (JANUARY 1 - JULY 31, 1980)
BY NUMBER, LIVE WEIGHT AND VALUE; SELECTED STATES

STATE	TOTAL SALES ^{3/}			BROODFISH					
	NUMBER SOLD	LIVE WEIGHT	VALUE	INVENTORY NUMBER	SALES			AVERAGE ^{1/}	
					NUMBER SOLD	LIVE WEIGHT	VALUE	LIVE WEIGHT	VALUE PER POUND
	THOUSANDS	1,000 POUNDS	1,000 DOLLARS	THOUSANDS	1,000 POUNDS	1,000 DOLLARS	POUNDS	DOLLARS	
CALIF	2,769	1,365	2,108						
GA	713	209	323						
IDAHO	38,119	24,772	18,092	88					
MO	306	213	399						
PA	1,872	1,177	2,286	18	3	5	8	2.0	
WASH	1,633	287	574	53				1.40	
WIS	1,222	355	673	8					
OTH ^{2/}	119	85	140	129	4	10	17	2.3	
TOTAL	46,753	28,463	24,595	296	7	15	25	2.2	

TROUT: FRY/FINGERLING INVENTORY (AUGUST 1, 1980) AND SALES (JANUARY 1 - JULY 31, 1980)
BY NUMBER, LIVE WEIGHT AND VALUE; SELECTED STATES

STATE	INVENTORY			SALES					
	NUMBER	LIVE WEIGHT	AVERAGE WEIGHT	NUMBER SOLD	LIVE WEIGHT	VALUE	AVERAGE ^{1/}		
							LIVE WEIGHT	VALUE PER POUND	
	THOUSANDS	1,000 POUNDS	POUNDS	THOUSANDS	1,000 POUNDS	1,000 DOLLARS	POUNDS	DOLLARS	
CALIF	5,660	521	.092	1,219	158	304	.130	1.92	
GA	1,060	85	.080	475	11	43	.023	3.85	
IDAHO	22,613	2,174	.096						
MO	831	58	.070						
PA	3,105	238	.077	564	28	103	.050	3.64	
WASH	3,570	184	.052	1,181	50	184	.042	3.66	
WIS	2,594	181	.070	642	38	74	.059	1.94	
OTH ^{2/}	160	31	.194	89	4	9	.030	3.41	
TOTAL	39,593	3,472	.088	4,170	289	717	.069	2.48	

TROUT: FOODSIZE INVENTORY (AUGUST 1, 1980) AND SALES (JANUARY 1 - JULY 31, 1980)
BY NUMBER, LIVE WEIGHT AND VALUE; SELECTED STATES

STATE	INVENTORY			SALES					
	NUMBER	LIVE WEIGHT	AVERAGE WEIGHT	NUMBER SOLD	LIVE WEIGHT	VALUE	AVERAGE ^{1/}		
							LIVE WEIGHT	VALUE PER POUND	
	THOUSANDS	1,000 POUNDS	POUNDS	THOUSANDS	1,000 POUNDS	1,000 DOLLARS	POUNDS	DOLLARS	
CALIF	1,385	851	.61	1,548	1,204	1,798	.78	1.49	
GA	183	145	.79	238	198	280	.83	1.41	
IDAHO	25,720	15,844	.62	38,101	24,771	18,091	.65	.73	
MO	579	357	.62	243	211	391	.87	1.85	
PA	908	873	.96	1,305	1,144	2,175	.88	1.90	
WASH	1,437	529	.37	452	237	390	.52	1.65	
WIS	504	278	.55	578	311	590	.54	1.90	
OTH ^{2/}	69	55	.80	111	83	138	.74	1.67	
TOTAL	30,785	18,932	.61	42,576	28,159	23,853	.66	.85	

1/ AVERAGES ARE BASED ON UNROUNDED DATA.

2/ INCLUDES ALA AND ARK. INCLUDES ADDITIONAL STATES FOR SELECTED ITEMS.

3/ INCLUDES SALES OF BROODFISH, FRY/FINGERLING, AND FOODSIZE.

TROUT: FRY/FINGERLING SALES OUTLETS BY NUMBER SOLD AND LIVE WEIGHT;
 JANUARY 1 - JULY 31, 1980; SELECTED STATES

STATE	OTHER PRODUCERS			LIVE HAUL			FEE AND RECREATIONAL			
	NUMBER SOLD	LIVE WEIGHT	PERCENT OF LIVE WEIGHT SOLD	NUMBER SOLD	LIVE WEIGHT	PERCENT OF LIVE WEIGHT SOLD	NUMBER SOLD	LIVE WEIGHT	PERCENT OF LIVE WEIGHT SOLD	
	THOUSANDS	1,000 POUNDS		THOUSANDS	1,000 POUNDS		THOUSANDS	1,000 POUNDS		
CALIF	520	40	25	99	39	25	584	73	46	
GA	245	3	27	65	1	9	108	1	9	
PA	287	22	79	89	2	7	179	3	11	
WASH	259	7	14	353	8	16	569	35	70	
WIS	321	10	26	129	6	16	54	14	37	
OTH <u>2/</u>	89	4	100							
TOTAL	1,721	86	30	735	56	19	1,494	126	44	
	OTHER SOURCES					TOTAL SALES <u>1/</u>				
	NUMBER SOLD	LIVE WEIGHT	PERCENT OF LIVE WEIGHT SOLD	NUMBER SOLD	LIVE WEIGHT		NUMBER SOLD	LIVE WEIGHT		
	THOUSANDS	1,000 POUNDS		THOUSANDS	1,000 POUNDS		THOUSANDS	1,000 POUNDS		
CALIF	16	6	4	1,219	158					
GA	57	6	55	475	11					
PA	9	1	3	564	28					
WASH				1,181	50					
WIS	138	8	21	642	38					
OTH <u>2/</u>				89	4					
TOTAL	220	21	7	4,170	289					

1/ NO SALES REPORTED FOR GOVERNMENT AGENCIES.
2/ INCLUDES ALA, ARK, IDAHO AND MO.

TROUT: FOODSIZE SALES OUTLETS BY NUMBER SOLD AND LIVE WEIGHT;
JANUARY 1 - JULY 31, 1980, SELECTED STATES

STATE	PROCESSORS			LIVE HAUL			CONSUMERS		
	NUMBER SOLD	LIVE WEIGHT	PERCENT OF LIVE WEIGHT SOLD	NUMBER SOLD	LIVE WEIGHT	PERCENT OF LIVE WEIGHT SOLD	NUMBER SOLD	LIVE WEIGHT	PERCENT OF LIVE WEIGHT SOLD
	THOUSANDS	1,000 POUNDS		THOUSAND	1,000 POUNDS		THOUSAND	1,000 POUNDS	
CALIF	6	4	2/	119	55	5	8	5	2/
GA	66	54	27	15	9	5	56	55	28
IDAHO	37,833	24,565	99				1/	1/	2/
MO	9	7	3	10	8	4	63	69	33
PA				87	62	6	299	345	30
WASH				3	2	1	190	116	49
WIS	11	7	2	60	31	10	14	6	2
OTH 3/							20	11	13
TOTAL	37,925	24,637	88	294	167	1	650	607	2

	FEE AND RECREATIONAL			OTHER PRODUCERS			GOVERNMENT AGENCIES		
	NUMBER SOLD	LIVE WEIGHT	PERCENT OF LIVE WEIGHT SOLD	NUMBER SOLD	LIVE WEIGHT	PERCENT OF LIVE WEIGHT SOLD	NUMBER SOLD	LIVE WEIGHT	PERCENT OF LIVE WEIGHT SOLD
	THOUSANDS	1,000 POUNDS		THOUSANDS	1,000 POUNDS		THOUSANDS	1,000 POUNDS	
CALIF	674	587	49	175	144	12	300	240	20
GA	50	38	19	32	26	13			
IDAHO	25	26	2/	43	40	2/			
MO	102	78	37	39	30	14	9	7	3
PA	722	576	50	133	119	10			
WASH	79	33	14	44	10	4			
WIS	253	132	43	35	19	6			
OTH 3/	35	33	40	15	10	12	16	10	12
TOTAL	1,940	1,503	5	516	398	1	325	257	1

	OTHER SOURCES			TOTAL SALES		
	NUMBER SOLD	LIVE WEIGHT	PERCENT OF LIVE WEIGHT SOLD	NUMBER SOLD	LIVE WEIGHT	
	THOUSANDS	1,000 POUNDS		THOUSANDS	1,000 POUNDS	
CALIF	266	169	14	1,548	1,204	
GA	19	16	8	238	198	
IDAHO	200	140	1	38,101	24,771	
MO	11	12	6	243	211	
PA	64	42	4	1,305	1,144	
WASH	136	76	32	452	237	
WIS	205	116	37	578	311	
OTH 3/	25	19	23	111	83	
TOTAL	926	590	2	42,576	28,159	

1/ LESS THAN 500.
2/ LESS THAN 0.5 PERCENT.
3/ INCLUDES ALA AND ARK.

*U.S. GOVERNMENT PRINTING OFFICE: 1980-O-340-932/ISS-279

END